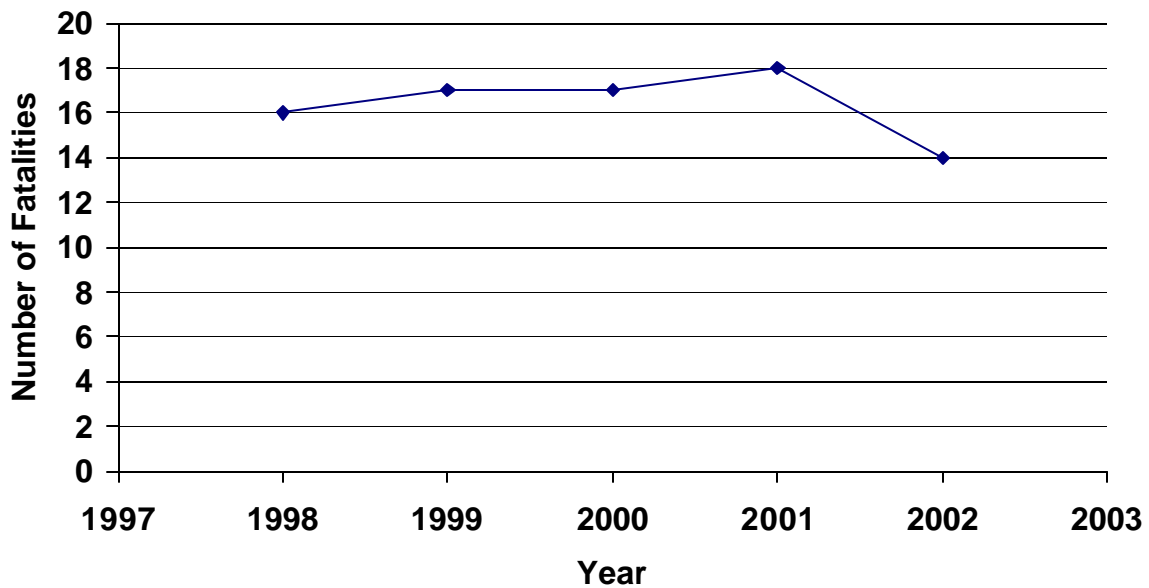


**Construction fatalities supplement, 2002**  
**WA FACE Program**  
**May 7, 2003**

In 2002, there were 14 construction fatalities as counted by the FACE program (Figure 1). Most of the incidents are due to falls from elevation, machinery, and motor vehicle collisions (Figure 2) and occur in the specialty trades (Figure 3). The workers had a number different occupations (Figure 4) and the incidents were in a variety of counties, though King county had the most (Table 1).



**Figure 1 Construction fatalities over time.**

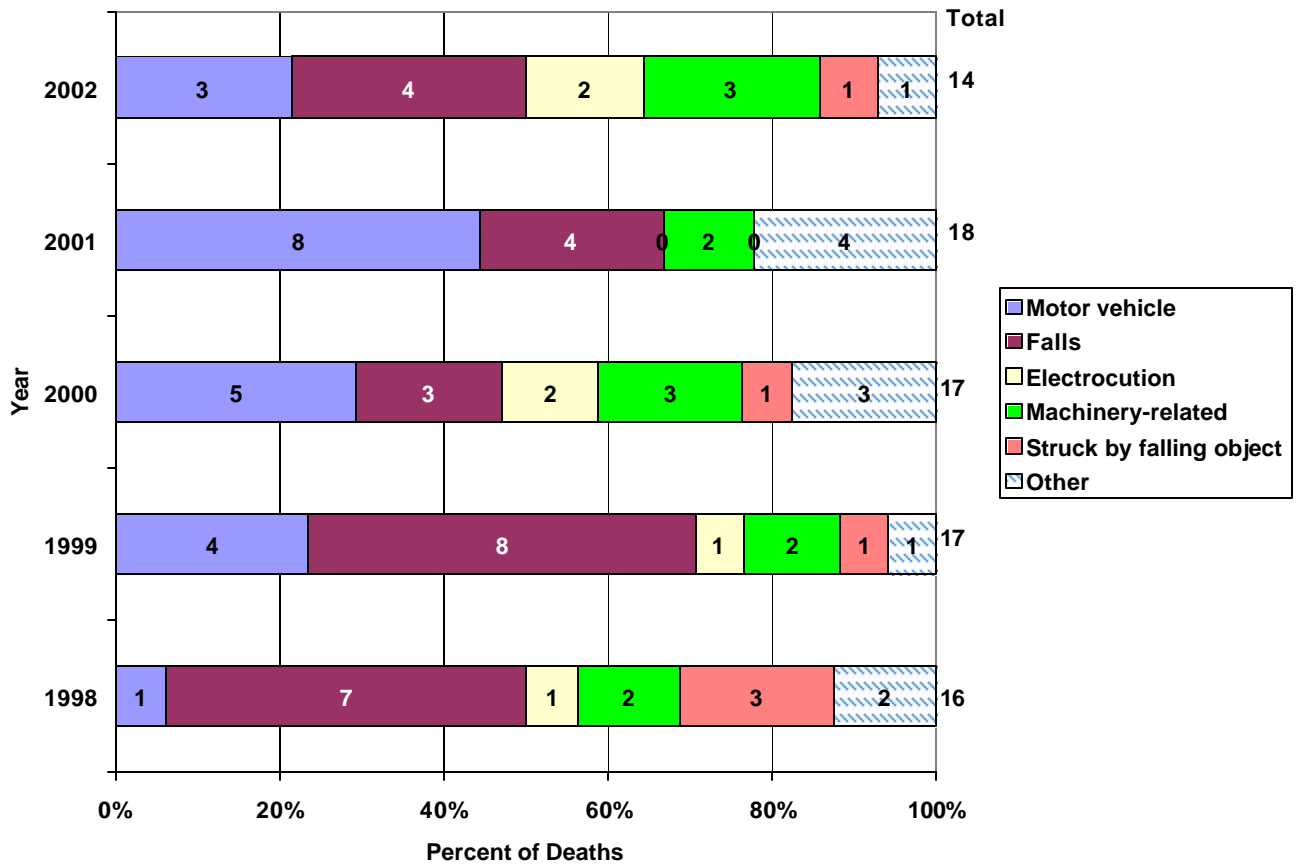


Figure 2. Type of fatal incident, WA FACE, as of May 7, 2003

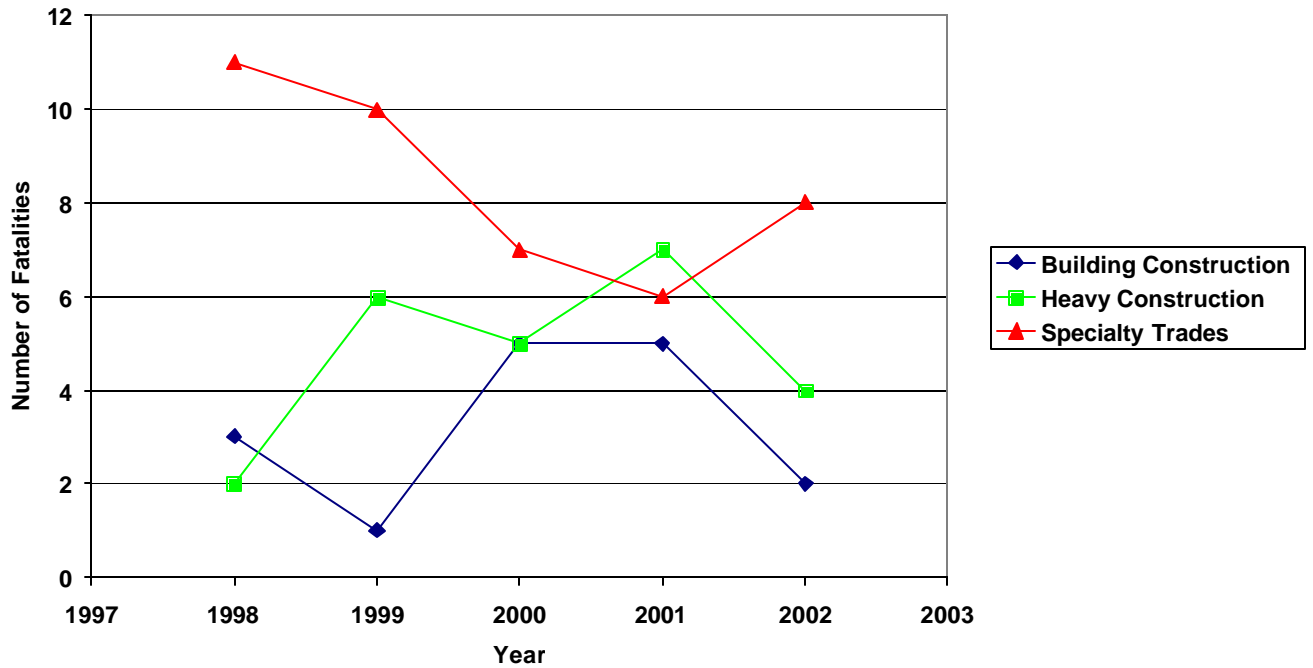


Figure 3. Distribution of industry group, WA FACE, as of May 7, 2003

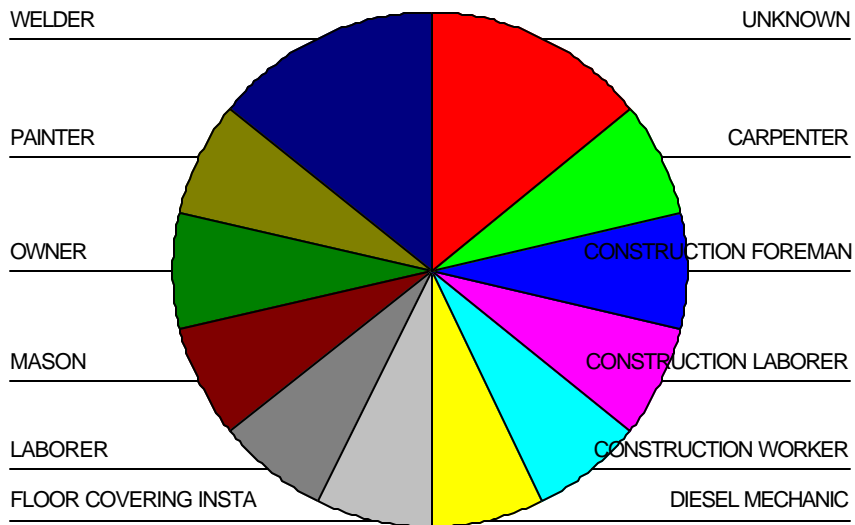


Figure 4. Distribution of occupation, WA FACE, as of May 7, 2003

**Table 1. County of Incident**

<b>County</b>	<b>Number</b>
King	3
Snohomish	2
Grant	2
Pierce	2
Pend Oreille	1
Skagit	1
Spokane	1
Walla Walla	1
<u>Yakima</u>	<u>1</u>
<b>Total</b>	<b>14</b>