

**Construction fatalities supplement, 2001
WA FACE Program
April 8, 2002**

In 2001, there were 17 construction fatalities as counted by the FACE program. This number has remained relatively stable over the last 4 years (Figure 1). The types of incidents have changed over time with falls from elevation and motor vehicle collisions accounting for the majority of incidents. In the year 2001, a little less than half of the incidents were in the heavy construction (SIC code=16), which is an increase from past years (Figure 3). Most incidents occurred in King and Pierce counties (Figure 4).

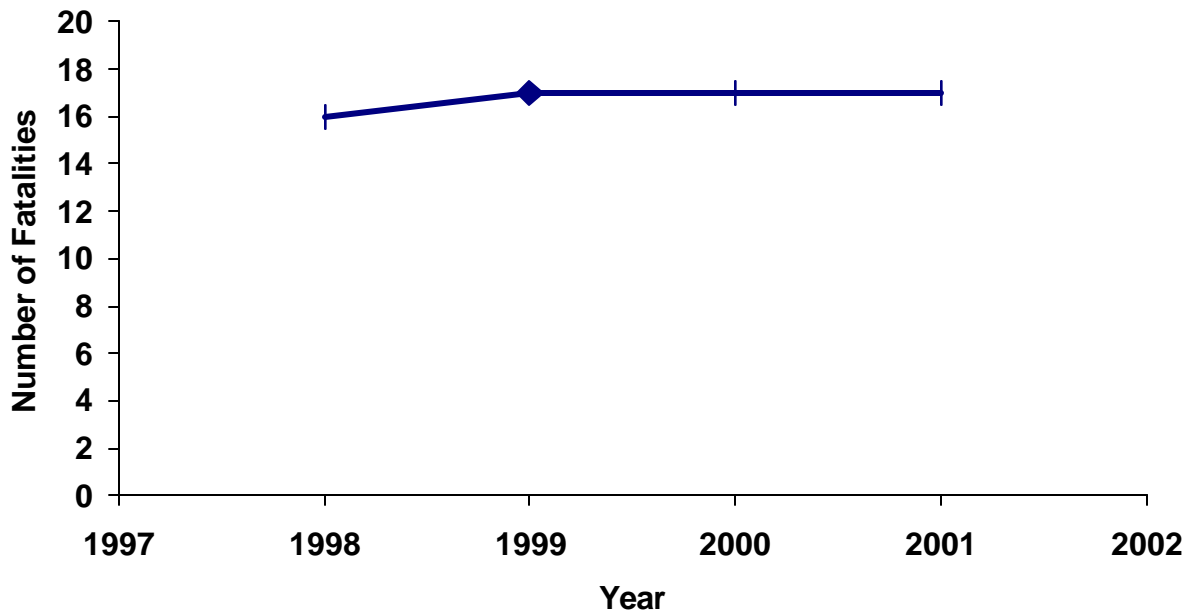


Figure 1 The number of construction fatalities over time.

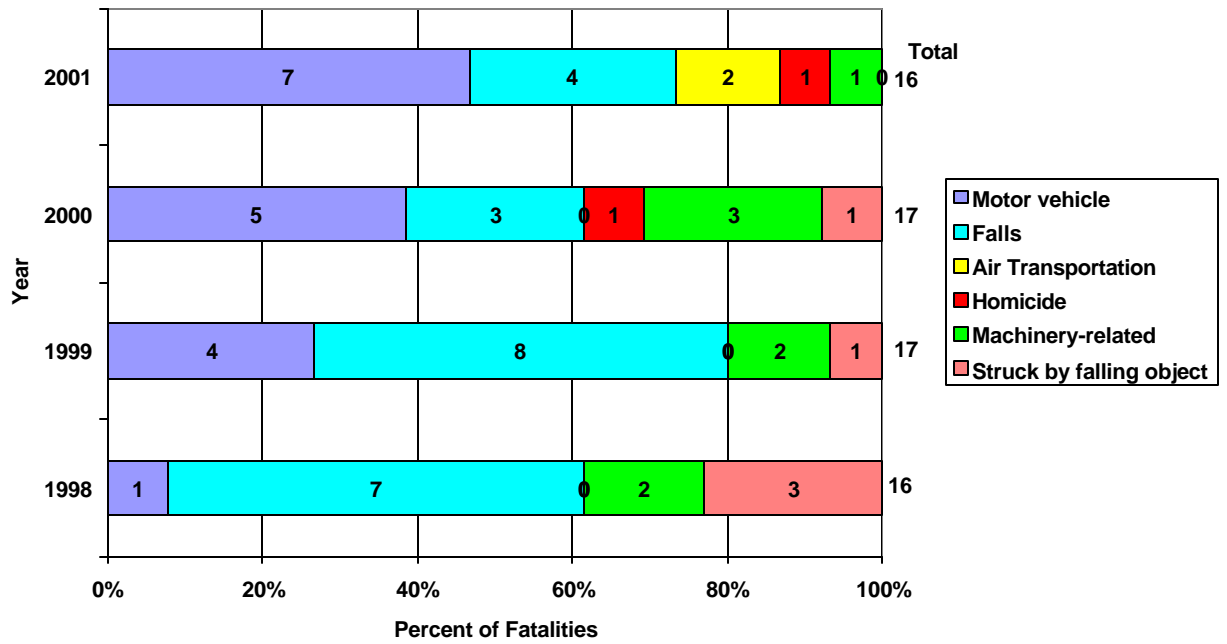


Figure 2 The types of fatal incidents over time.

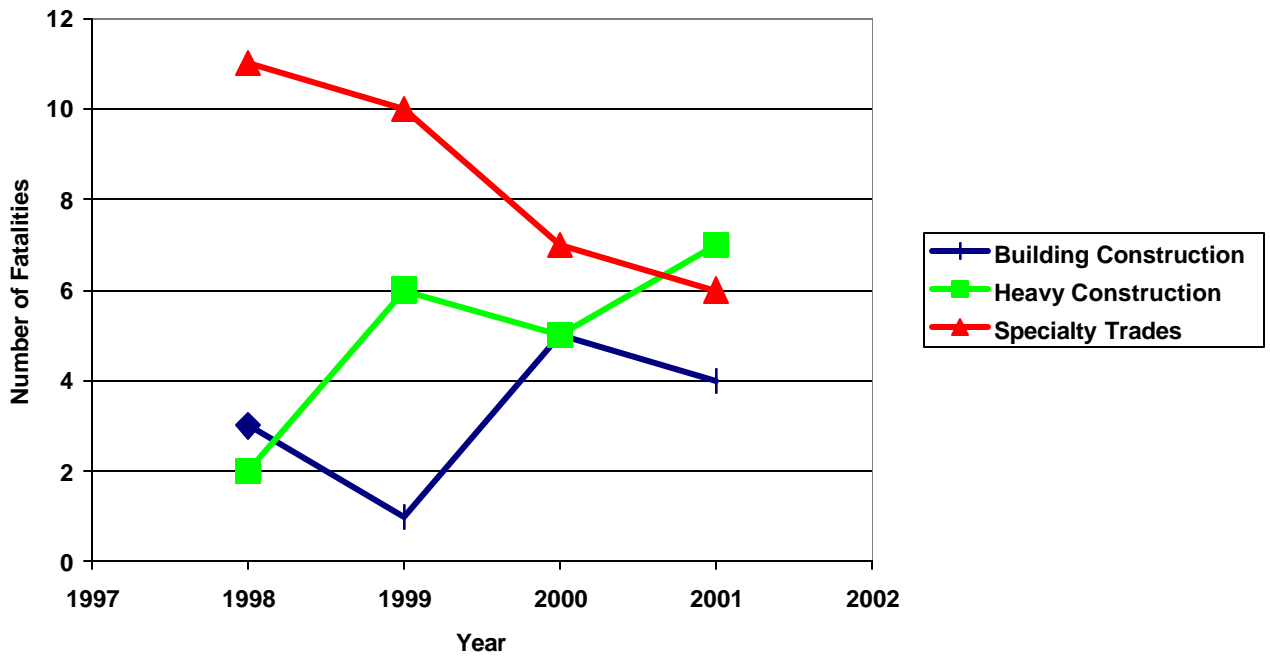


Figure 3 The industry sectors over time.

Table 1 FACE construction fatalities
by county, 2001, n=17

County	Number	Percent
King	7	44
Pierce	3	19
San Juan	2	13
Skamania	1	6
Snohomish	1	6
Whatcom	1	6
Grant	1	6
Grays Harbor	1	6
Total	17	100