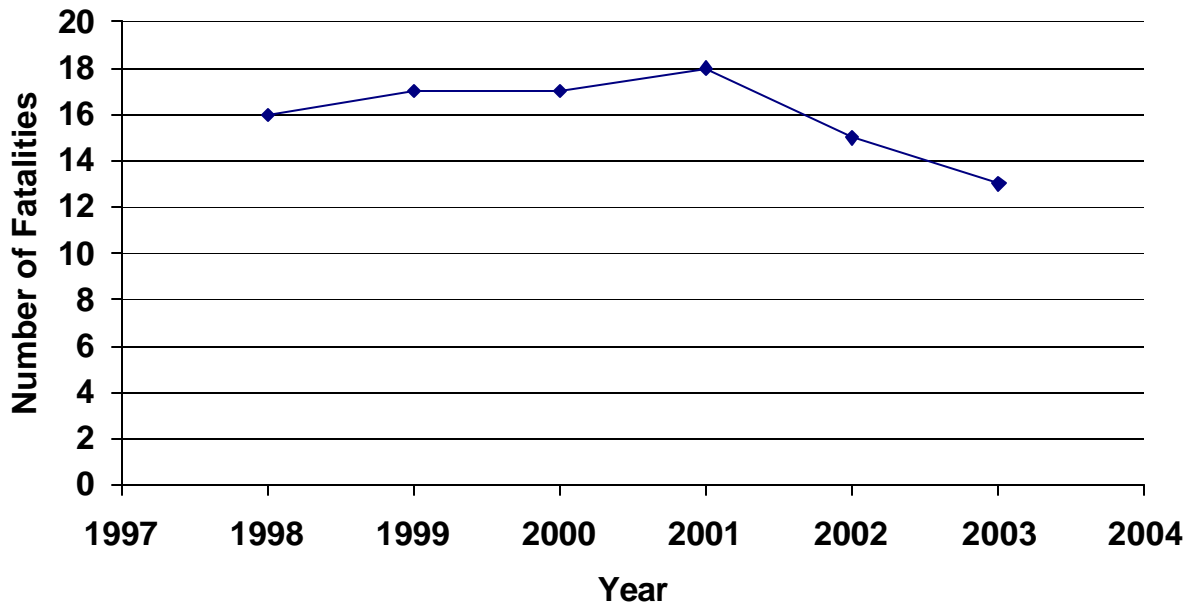


**Construction fatalities supplement, 2003  
WA FACE Program  
May 5, 2004**

In 2003, there were 13 construction fatalities (as defined by the company's SIC code) as counted by the WA FACE program (Figure 1). Most of the incidents in 2003 were due to falls from elevation, being struck by a falling object, machinery, and motor vehicle collisions (Figure 2) and occurred in the specialty trades (Figure 3). In the three incidents where a worker was struck by a falling object, the objects were a tree, sheets of plywood, and soil. The workers had a number of different occupations (Figure 4) and the incidents were in a variety of counties, though King County had the most (Table 1).

**NOTE:** There have been a number of incidents this last year in which the company was doing construction-type of work, but due to industry coding for that company, the companies do not appear in this data summary as a construction company.



**Figure 1 Construction fatalities over time.**

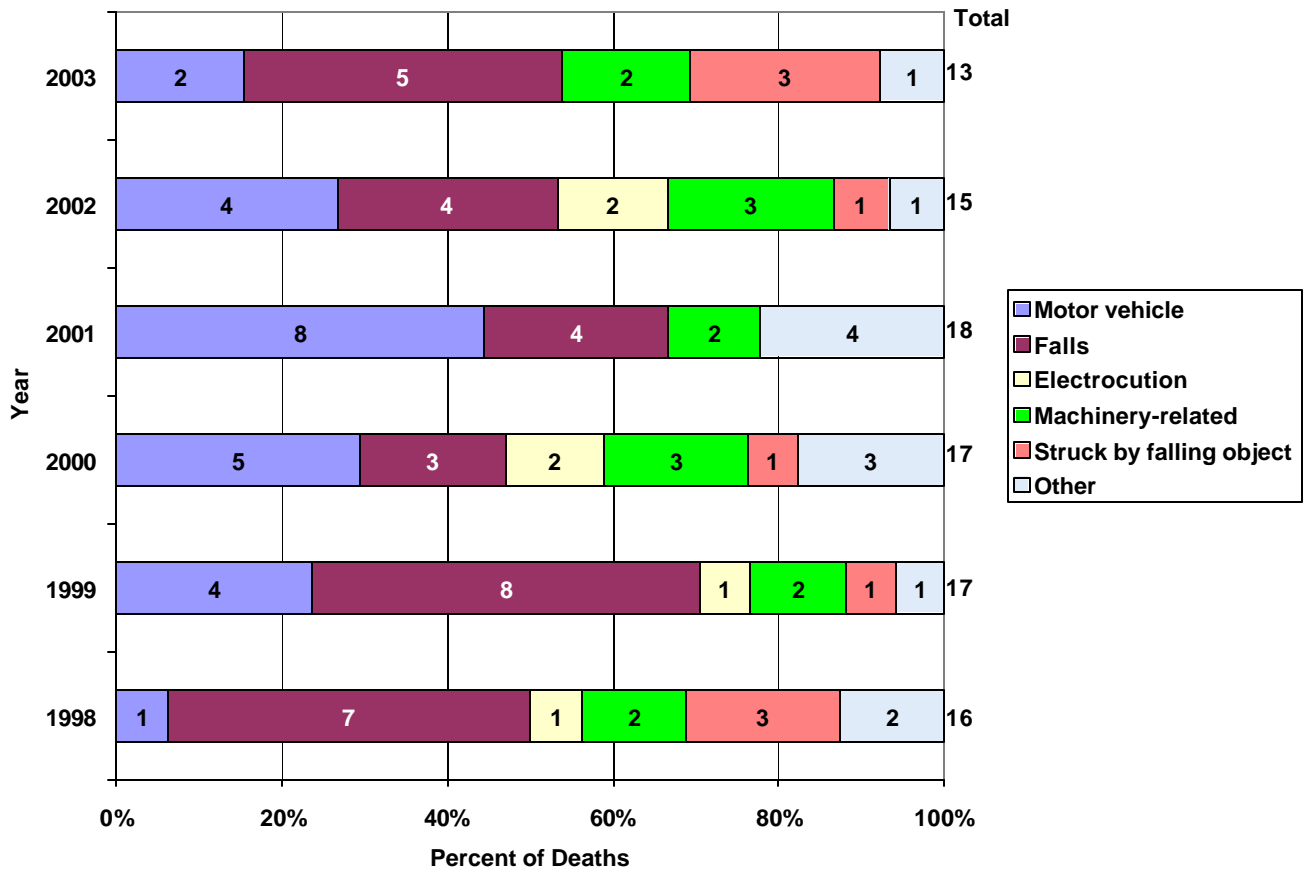
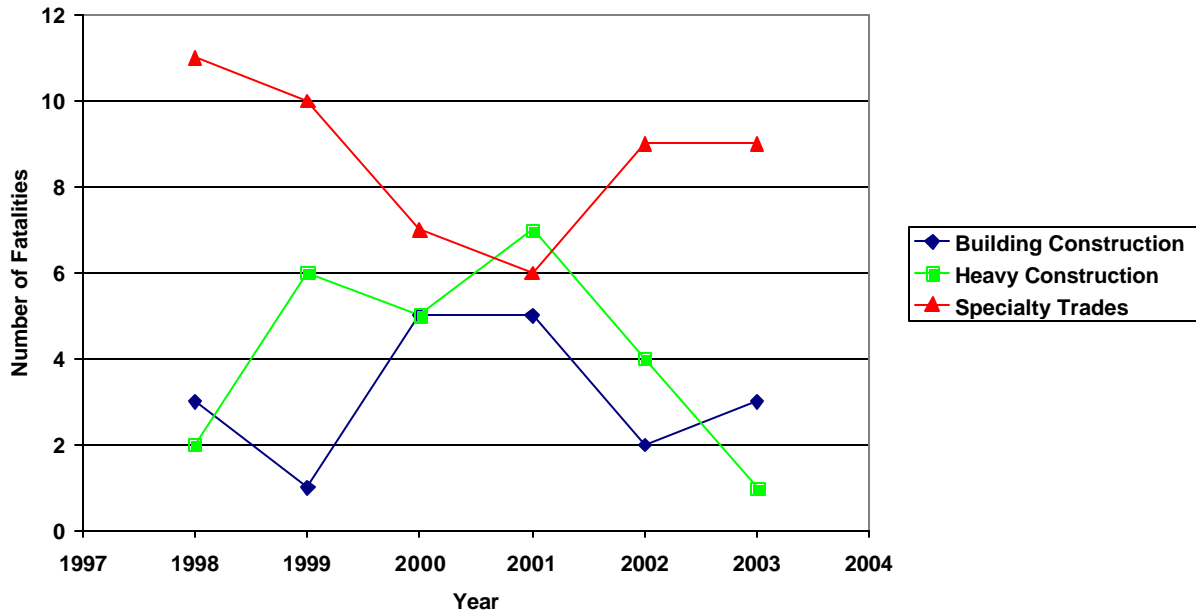
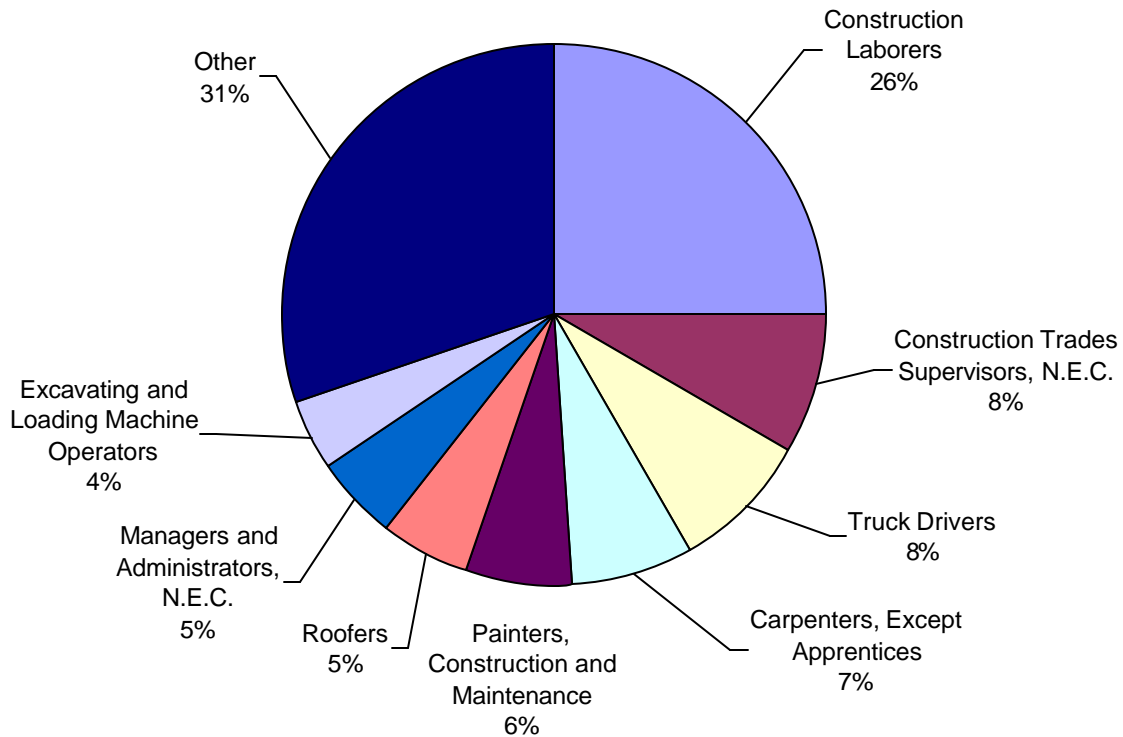


Figure 2. Type of fatal incident, WA FACE, as of May 5, 2004



**Figure 3. Distribution of industry group, WA FACE, as of May 5, 2004**



**Figure 4. Distribution of occupations, WA FACE Program, 1998-2003, as of May 5, 2004**

**Table 1. County of Incident, WA FACE Program, 1998-2003,  
as of May 5, 2004**

<b>County</b>	<b>1998</b>	<b>1999</b>	<b>2000</b>	<b>2001</b>	<b>2002</b>	<b>2003</b>	<b>Total</b>	<b>%</b>
King	4	5	6	7	4	4	30	31
Pierce		2	1	3	2	2	10	10
Snohomish	1	2	1	1	2	1	8	8
Whatcom	1	2	1	1		1	6	6
Grant	1			1	2		4	4
Spokane	1		1		1	1	4	4
Kitsap	1		2				3	3
San Juan			1	2			3	3
Clark		2		1			3	3
Cowlitz	1	1					2	2
Franklin	1		1				2	2
Klickitat	2						2	2
Lewis	2						2	2
Pend oreille	1				1		2	2
Skagit					1	1	2	2
Yakima			1		1		2	2
Adams			1				1	1
Benton		1					1	1
Chelan		1					1	1
Douglas			1				1	1
Grays Harbor				1			1	1
Thurston		1					1	1
Skamania				1			1	1
Walla Walla					1		1	1
Stevens						1	1	1
Mason						1	1	1
Jefferson						1	1	1
<b>Total</b>	<b>16</b>	<b>17</b>	<b>17</b>	<b>18</b>	<b>15</b>	<b>13</b>	<b>96</b>	<b>100</b>