

**Construction Fatalities Supplement, 2004
WA FACE Program
January 7, 2005**

In 2004 there were 17 construction fatalities (defined by the company's NAICS code) as counted by the WA FACE program (Figure 1). Most of the incidents in 2004 were due to falls from elevation, machinery, and motor vehicle incidents (Figure 2) and have occurred in the specialty trades (Figure 3). Nine of the 17 fatalities in construction during 2004 were either laborers, carpenters, or truck/equipment operators (Figure 4), and the incidents were in a variety of counties, though King and Snohomish Counties had the most (Table 1).

NOTE: There were several incidents this year in which the company was doing construction-type of work, but due to industry coding for that company or incidents occurring outside of Washington State, these cases do not appear in this data summary.

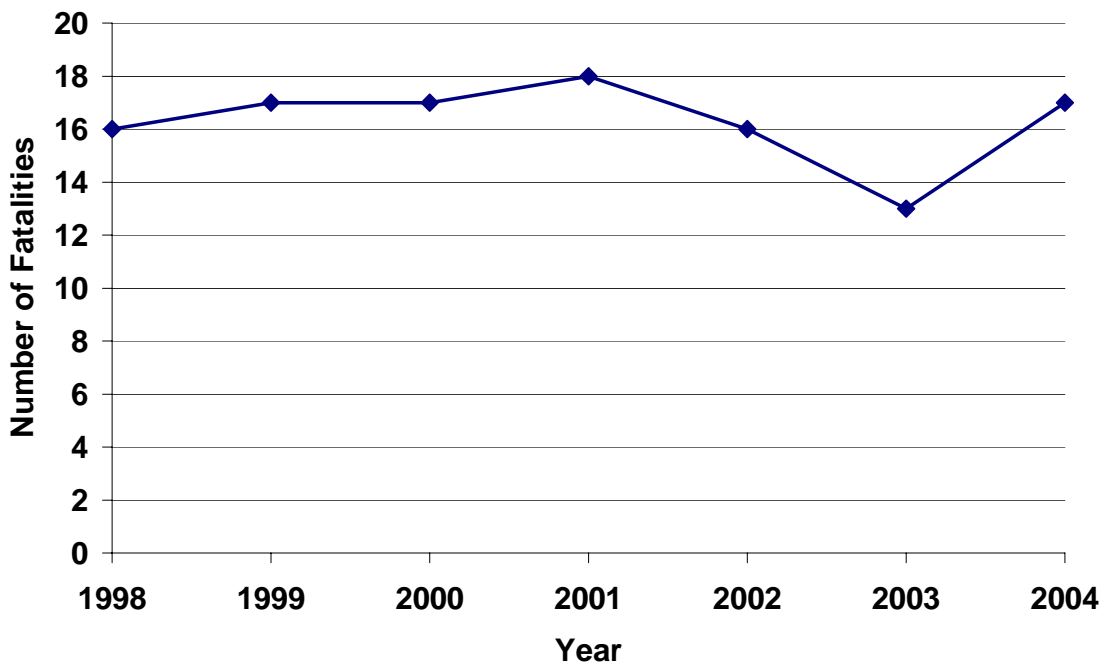


Figure 1. Construction fatalities in Washington State over time.

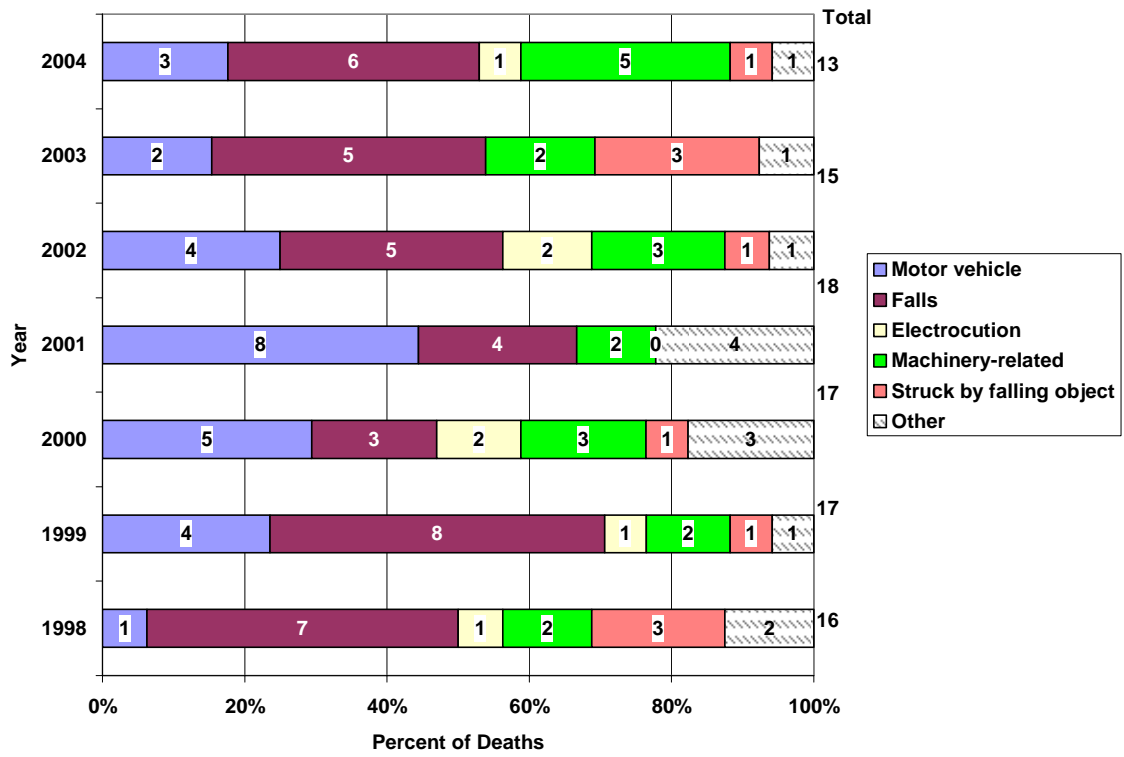


Figure 2. Type of fatal incident by year, WA FACE, 1998-2004.

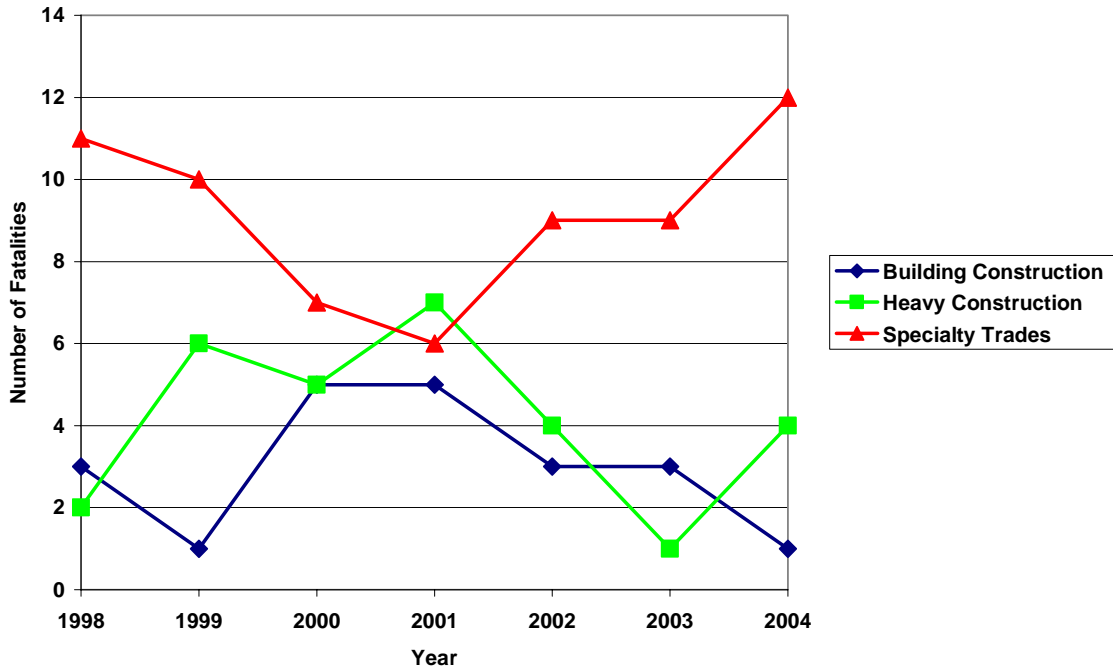


Figure 3. Distribution of workplace fatalities by industry group and year, WA FACE.

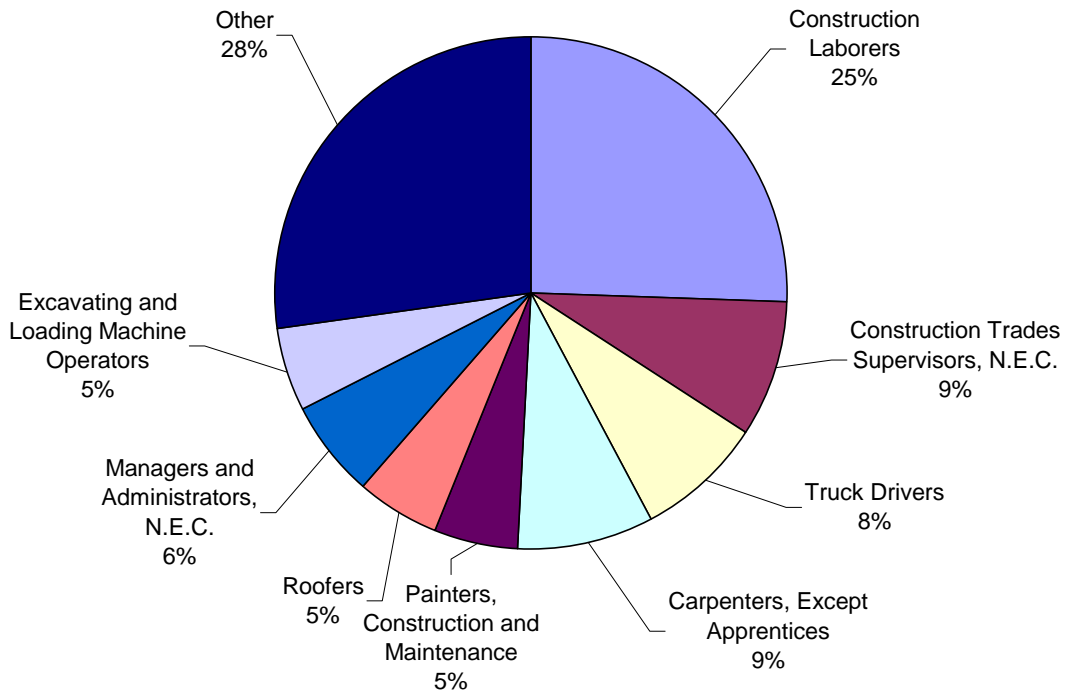


Figure 4. Distribution of workplace fatalities by occupation, WA FACE Program, 1998-2004.

Table 1. County of Incident, WA FACE Program, 1998-2004

County	1998	1999	2000	2001	2002	2003	2004	Total	%
King	4	5	6	7	5	4	4	35	31
Snohomish	1	2	1	1	2	1	3	11	10
Pierce		2	1	3	2	2	1	11	10
Whatcom	1	2	1	1		1		6	5
Grant	1			1	2		1	5	4
Spokane	1		1		1	1		4	4
Kitsap	1		2				1	4	4
San Juan			1	2				3	3
Clark		2		1				3	3
Cowlitz	1	1					1	3	3
Franklin	1		1					2	2
Klickitat	2							2	2
Lewis	2							2	2
Pend oreille	1				1			2	2
Skagit					1	1		2	2
Yakima			1		1			2	2
Benton		1					1	2	2
Douglas			1				1	2	2
Adams			1					1	1
Chelan		1						1	1
Grays Harbor				1				1	1
Thurston		1					1	2	2
Skamania				1				1	1
Walla Walla					1			1	1
Stevens						1		1	1
Mason						1		1	1
Jefferson						1		1	1
Whitman							1	1	1
Island							1	1	1
Wahkiakum							1	1	1
Total	16	17	17	18	16	13	17	114	100