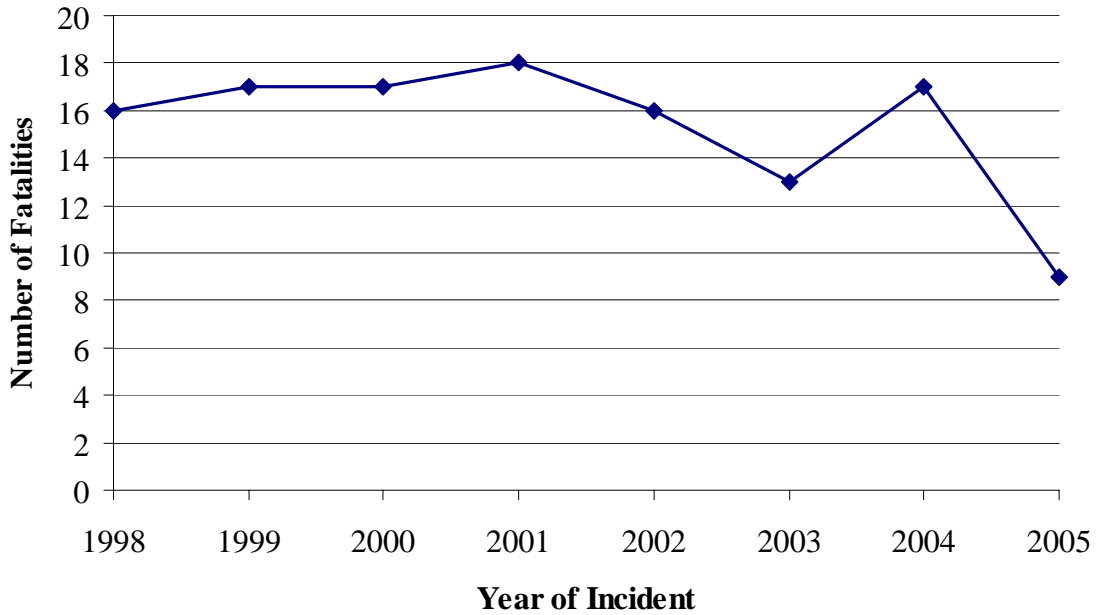


**Construction Fatalities Supplement, 2005  
WA FACE Program  
January 9, 2006**

In 2005 there were 9 construction fatalities (defined by the company's NAICS code) as counted by the WA FACE program (Figure 1). Three of the incidents in 2005 were machine-related, two were motor vehicle incidents, two were falls from elevation, and two were struck-by incidents (Figure 2). Four of the nine occurred in building construction (Figure 3). The nine fatalities in construction during 2005 were distributed across types of occupations (Figure 4), and all but two of the incidents occurred in different counties (Table 1).



**Figure 1. Construction fatalities in Washington State over time.**

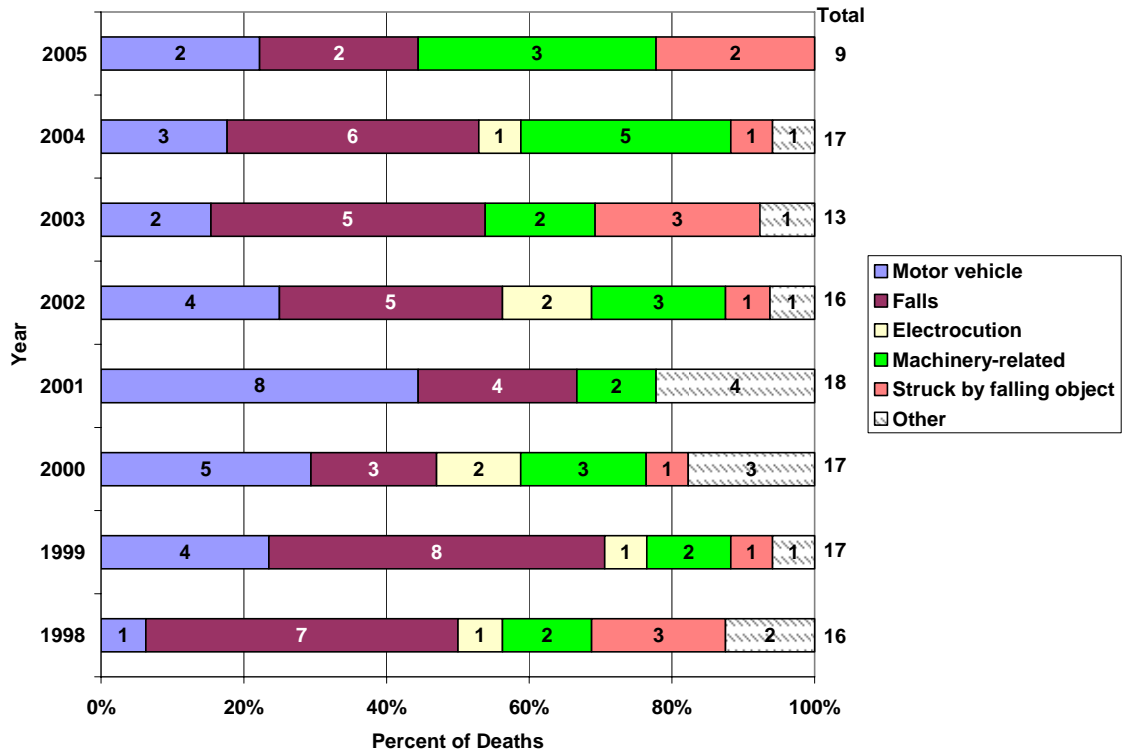


Figure 2. Type of fatal incident by year, WA FACE, 1998-2005.

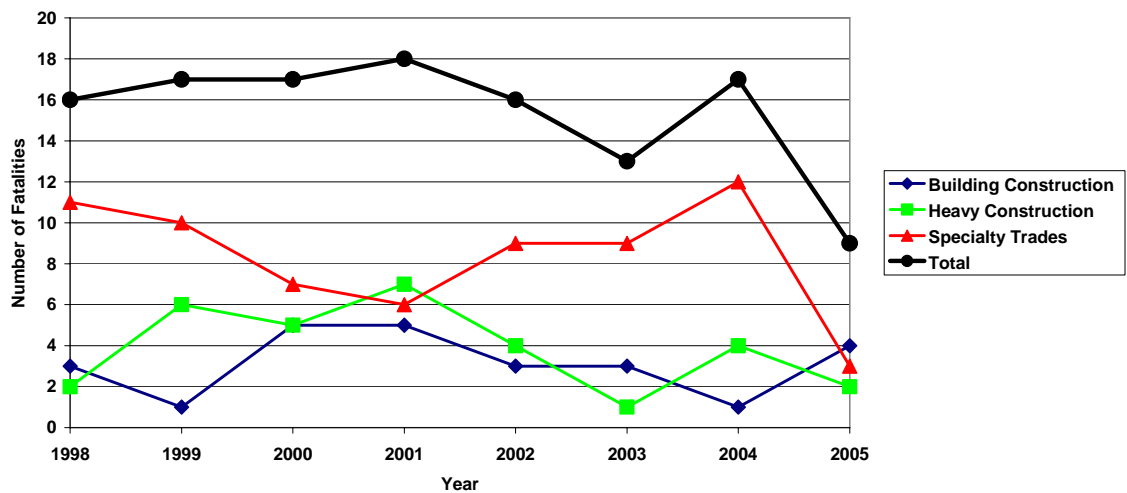
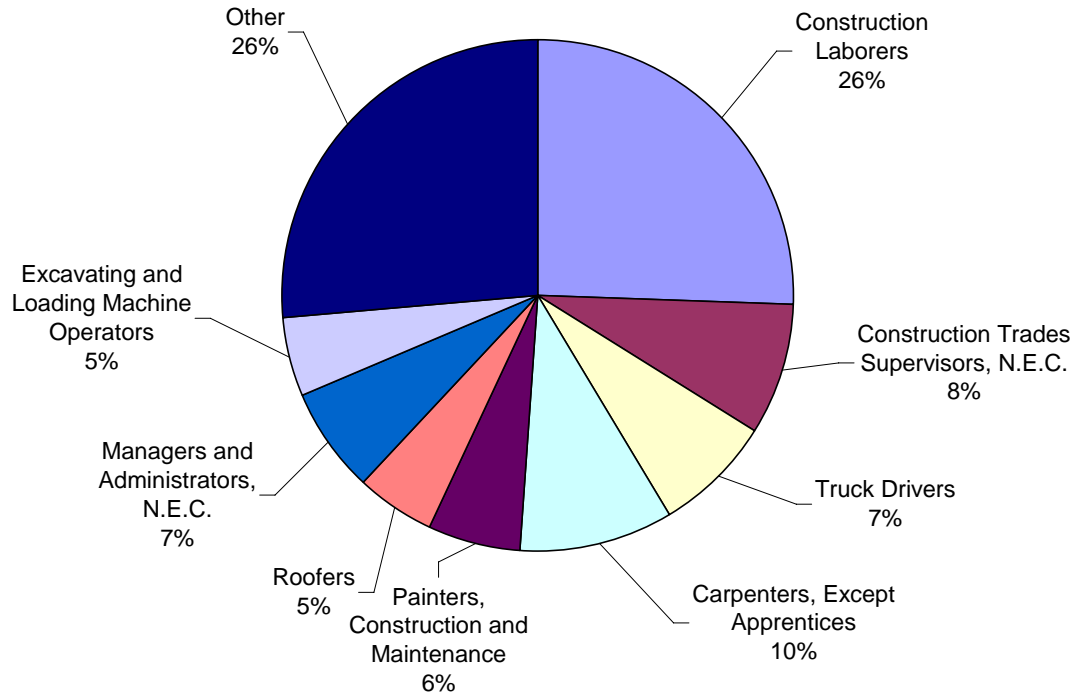


Figure 3. Distribution of workplace fatalities by industry group and year, WA FACE.



**Figure 4. Distribution of workplace fatalities by occupation, WA FACE Program, 1998-2005.**

**Table 1. County of Incident, WA FACE Program, 1998-2005**

<b>County</b>	<b>1998</b>	<b>1999</b>	<b>2000</b>	<b>2001</b>	<b>2002</b>	<b>2003</b>	<b>2004</b>	<b>2005</b>	<b>Total</b>	<b>%</b>
King	4	5	6	7	5	4	4	2	37	30
Snohomish	1	2	1	1	2	1	3	1	12	10
Pierce		2	1	3	2	2	1	1	12	10
Whatcom	1	2	1	1		1		1	7	6
Grant	1			1	2		1		5	4
Spokane	1		1		1	1			4	4
Kitsap	1		2				1		4	4
San Juan			1	2					3	3
Clark		2		1				1	4	3
Cowlitz	1	1					1		3	3
Franklin	1		1						2	2
Klickitat	2								2	2
Lewis	2								2	2
Pend Oreille	1				1				2	2
Skagit					1	1			2	2
Yakima			1		1				2	2
Benton		1					1		2	2
Douglas			1				1	1	3	2
Adams			1						1	1
Chelan		1							1	1
Grays Harbor				1					1	1
Thurston		1					1	1	3	2
Skamania				1					1	1
Walla Walla					1				1	1
Stevens						1			1	1
Mason						1			1	1
Jefferson						1		1	2	2
Whitman							1		1	1
Island							1		1	1
Wahkiakum							1		1	1
<b>Total</b>	<b>16</b>	<b>17</b>	<b>17</b>	<b>18</b>	<b>16</b>	<b>13</b>	<b>17</b>	<b>9</b>	<b>123</b>	<b>100</b>