

## **2001 Fatality Data Update- WA FACE Program, as of January 3, 2003**

---

Overview of Data and Inclusion Criteria

Monthly and Annual Count for 2001

Summary by County

Summary of Fatalities in WISHA Jurisdiction by Industry Division and WISHA Region

Summary of Fatalities by Incident Type

Summary by Industry (4 digit SIC code)

Summary by Industry Group (2 digit SIC code)

Map of the L&I Regions

# Summary of Fatality Data for Washington State in 2001 as of January 3, 2002, as counted by the FACE Program

The Fatality Assessment and Control Evaluation (FACE) Program at the Washington State Department of Labor and Industries collects data on all workplace acute trauma fatalities, regardless of WISHA/OSHA jurisdiction or workers' compensation insurance coverage. The summaries below include all of these data, except where indicated. More information on the program can be found on the FACE web site at "<http://www.lni.wa.gov/sharp/face>" or by calling us toll-free 1-888-667-4277.

## Who is Included:

All people who were working in the State or in/on the waters off of the State and died due to a work-related incident. This includes workers based in other states, but have fatal injury incidents in Washington.

## Types of Incidents Included

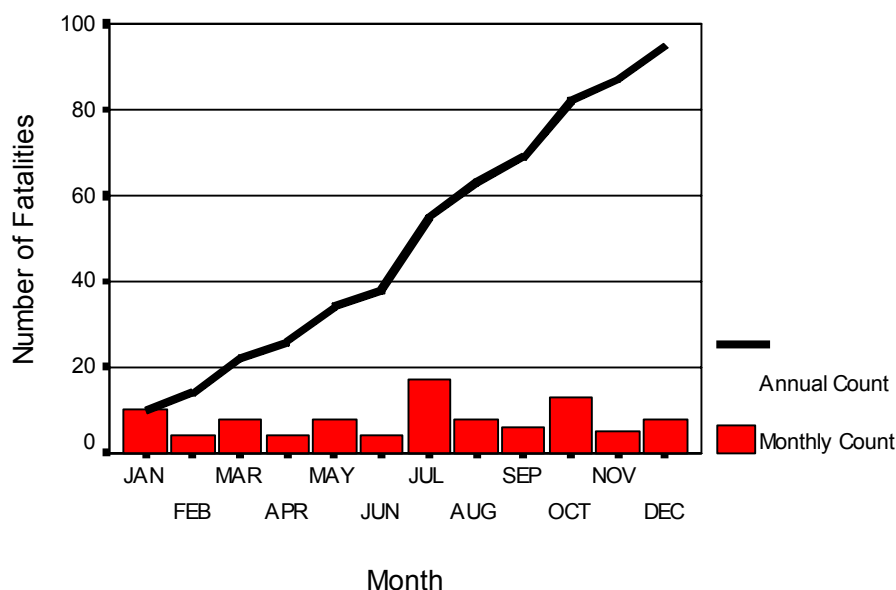
- Acute trauma fatalities
- Acute chemical exposures
- Suicide
- Motor vehicle incidents

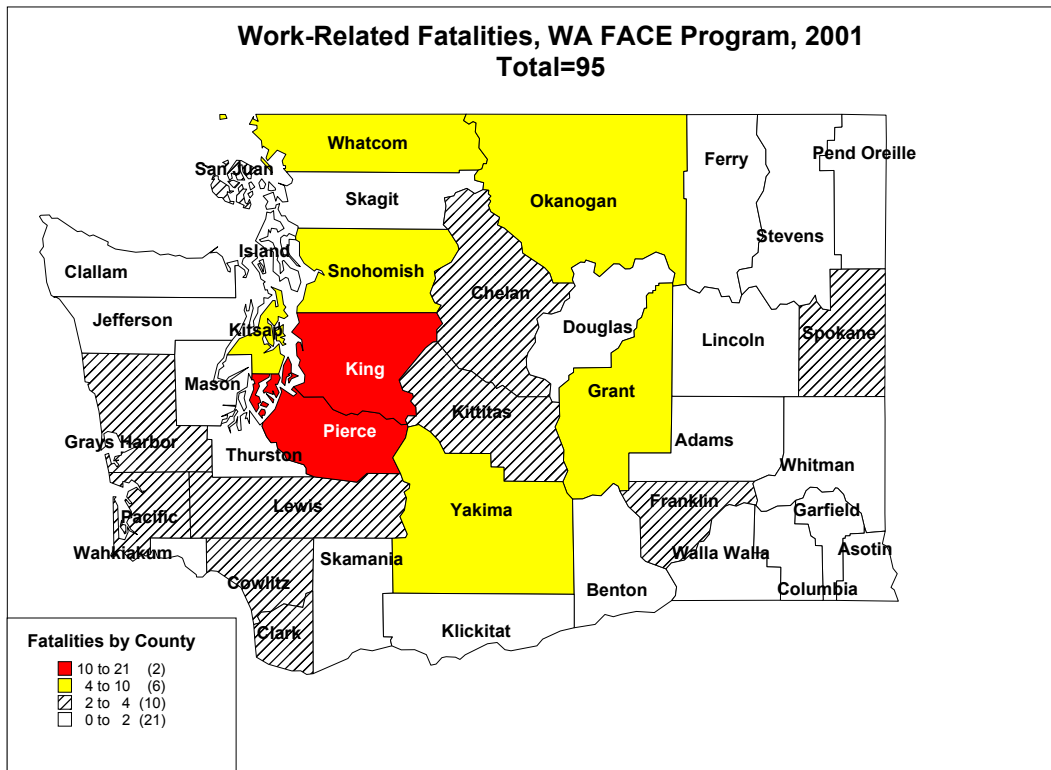
## Types of Incidents Not Included

- Naturally caused deaths (heart attacks, aneurysms, etc.) unless there is a work-related component.
- Diseases due to long-term exposure (asbestos and silica)

## Fatality Count - 2001, n=95

### Washington State FACE Program





**Fatalities by L&I Region and Industry Group, 2001**  
(Only includes incidents in WISHA jurisdiction –  
See page 8 for map of L&I regions)

Industry Group	L&I Region						Total
	1	2	3	4	5	6	
Agriculture, Forestry, & Fishing	0	0	1	1	4	0	6
Mining	0	0	0	0	0	0	0
Construction	2	6	3	2	0	0	13
Manufacturing	0	3	0	3	1	1	8
Transportation and Public Utilities	1	2	1	0	5	0	9
Wholesale Trade	0	1	0	0	1	2	4
Retail Trade	3	2	0	1	1	0	7
Finance, Insurance, & Real Estate	0	1	0	0	0	0	1
Service	1	2	3	0	1	0	7
Government	1	1	0	0	0	0	2
<b>Total</b>	<b>8</b>	<b>18</b>	<b>8</b>	<b>7</b>	<b>13</b>	<b>3</b>	<b>57</b>

**Fatalities by Incident Type, 2001,  
WA State, FACE Program**

<b>Incident Type</b>	<b>Number</b>	<b>Percent</b>
Motor vehicle	30	31.6
Machinery	14	13.7
Fall	13	13.7
Fire/Burn	7	7.4
Struck by falling object	7	7.4
Homicide	6	6.3
Air transportation	5	5.3
Electrocution	4	4.2
Suicide	3	3.2
Water transportation	3	3.2
Flying object/Caught in	1	1.1
Poisoning	1	1.1
<u>Rail transportation</u>	<u>1</u>	<u>1.1</u>
<b>Total</b>	<b>95</b>	<b>100.0</b>

**Fatalities by WA Industry, 2001, FACE Program**  
**Industry (4 digit SIC Code)**

	<b>Number</b>	<b>Percent</b>
Trucking, except local	7	6.4
Highway & street construction, except elevated highways	6	6.4
General contractors - single-family houses	4	4.3
Land, mineral, wildlife, & forest conservation	4	4.3
Local trucking, without storage	4	4.3
Logging	4	4.3
Shellfish	3	3.2
Crop preparation services for market, ex. cotton gin	2	2.2
Elementary & secondary schools	2	2.2
Excavating work	2	2.2
Field crops, except cash grains, nec	2	2.2
Groceries, general line	2	2.2
National security	2	2.2
Police protection	2	2.2
Air transportation, nonscheduled	1	1.1
Aircraft	1	1.1
Automotive glass replacement shops	1	1.1
Beef cattle, except feedlots	1	1.1
Bread & other bakery products, except cookies and crackers	1	1.1
Cable and other pay tv services	1	1.1
Carpentry work	1	1.1
Colleges, universities, & professional schools	1	1.1
Combination utilities, nec	1	1.1
Construction and mining (except petroleum) machinery	1	1.1
Construction sand and gravel	1	1.1
Correctional institutions	1	1.1
Courier services, except by air	1	1.1
Dairy farms	1	1.1
Deciduous tree fruits	1	1.1
Department stores	1	1.1
Eating places	1	1.1
Electric services	1	1.1
Farm management services	1	1.1
Finfish	1	1.1
Floor covering stores	1	1.1
Floor laying & other floor work, nec	1	1.1
Flour and other grain mill products	1	1.1
Forest nurseries and gathering of forest products	1	1.1
Funeral service and crematories	1	1.1
General contractors - residential bldgs, other than single family	1	1.1
General farms, primarily crop	1	1.1
Grocery stores	1	1.1
Heavy construction equipment rental and leasing	1	1.1

Industrial & commercial machinery & equipment, nec	1	1.1
Job training & vocational rehabilitation services	1	1.1
Lawn and garden services	1	1.1
Misc. apparel and accessory stores	1	1.1
Motor vehicle dealers (new & used)	1	1.1
Ornamental shrub and tree services	1	1.1
Passenger car rental	1	1.1
Plumbing, heating, and air-conditioning	1	1.1
Real estate agents and managers	1	1.1
Residential care	1	1.1
Sawmills and planing mills, general	1	1.1
Schools & educational serv., nec	1	1.1
Scrap & waste materials	1	1.1
Ship building & repairing	1	1.1
Softwood veneer & plywood	1	1.1
Special trade contractors, nec	1	1.1
Sporting goods stores and bicycle shops	1	1.1
United States Postal Service	1	1.1
Video tape rental	1	1.1
<u>Water, sewer &amp; communications &amp; power line construction</u>	<u>1</u>	<u>1.1</u>
<b>Total</b>	<b>95</b>	<b>100.0</b>

## Fatalities by WA Industry Sector, 2001, FACE Program

<b>Industry Sector (2 digit SIC Code)</b>	<b>Number</b>	<b>Percent</b>
Motor freight transportation and warehousing	12	12.4
Heavy construction other than building construction	7	7.3
Construction special trade contractors	6	6.3
Lumber & wood products, except furniture	6	6.3
Agricultural services	5	5.3
Building construction - general contractors & operative	5	5.3
Administration of environmental quality & housing programs	4	4.2
Agricultural production - crops	4	4.2
Educational services	4	4.2
Fishing, hunting, and trapping	4	4.2
Justice, public order and safety	3	3.2
Agricultural production - livestock and animal specialties	2	2.1
Automotive repair, services and parking	2	2.1
Electric, gas, and sanitary services	2	2.1
Food and kindred products	2	2.1
National security and international affairs	2	2.1
Social services	2	2.1
Transportation equipment	2	2.1
Wholesale trade - durable goods	2	2.1
Wholesale trade - nondurable goods	2	2.1
Apparel & accessory stores	1	1.1
Automotive dealers & gasoline service stations	1	1.1
Business services	1	1.1
Communications	1	1.1
Eating and drinking places	1	1.1
Food stores	1	1.1
Forestry	1	1.1
General merchandise stores	1	1.1
Home furniture, furnishings, and equipment stores	1	1.1
Industrial and commercial machinery and computer equipment	1	1.1
Mining & quarrying of nonmetallic minerals, except fuels	1	1.1
Miscellaneous retail	1	1.1
Motion picture	1	1.1
Personal services	1	1.1
Real estate	1	1.1
Transportation by air	1	1.1
<u>United Postal Service</u>	<u>1</u>	<u>1.1</u>
<b>Total</b>	<b>95</b>	<b>100.0</b>

# L&I Regions

