

2003 Fatality Data Update - WA FACE Program, as of May 5, 2004

Overview of Data and Inclusion Criteria

Monthly and Annual Count for 2003

Summary by County

Summary of Fatalities in WISHA Jurisdiction by Industry Division and WISHA Region

Summary of Fatalities by Incident Type

Summary by Industry (4 digit SIC code)

Summary by Industry Group (2 digit SIC code)

Ethnic origins of victims

Race of victims

Map of L&I Regions

Summary of Fatality Data for Washington State in 2003 as of May 5, 2004, as counted by the FACE Program

The Fatality Assessment and Control Evaluation (FACE) Program at the Washington State Department of Labor and Industries collects data on all workplace acute trauma fatalities, regardless of WISHA/OSHA jurisdiction or workers' compensation insurance coverage. The summaries below include all of these data, except where indicated. More information on the program can be found on the FACE web site at "<http://www.lni.wa.gov/sharp/face>" or by calling us toll-free 1-888-667-4277.

Who is Included:

All people who were working in the State or in/on the waters off of the State and died due to a work-related incident. This includes workers based in other states, but have fatal injury incidents in Washington.

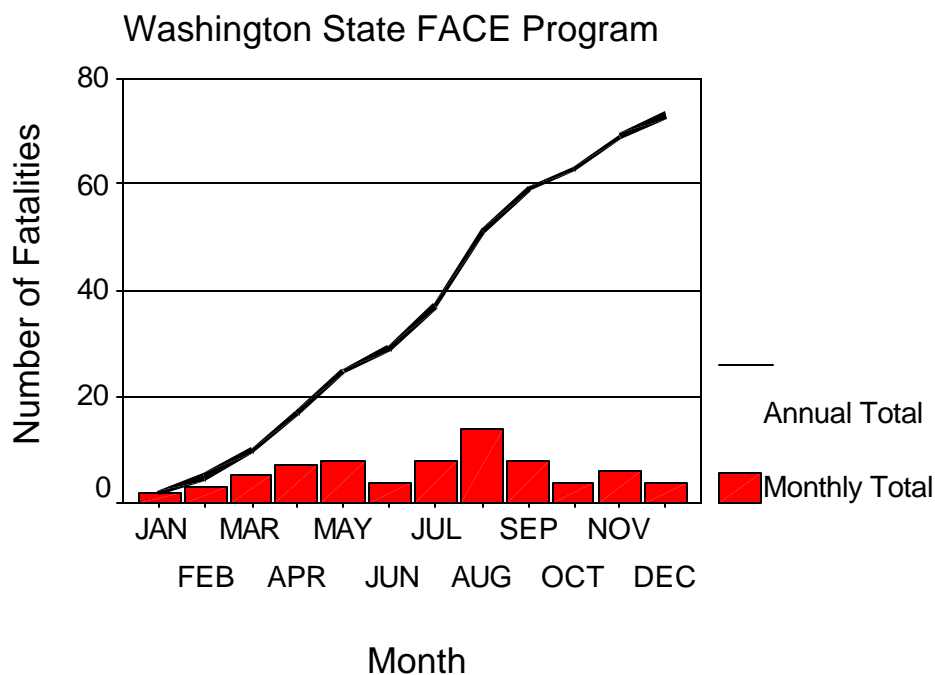
Types of Incidents Included

- Acute trauma fatalities
- Acute chemical exposures
- Suicide
- Motor vehicle incidents

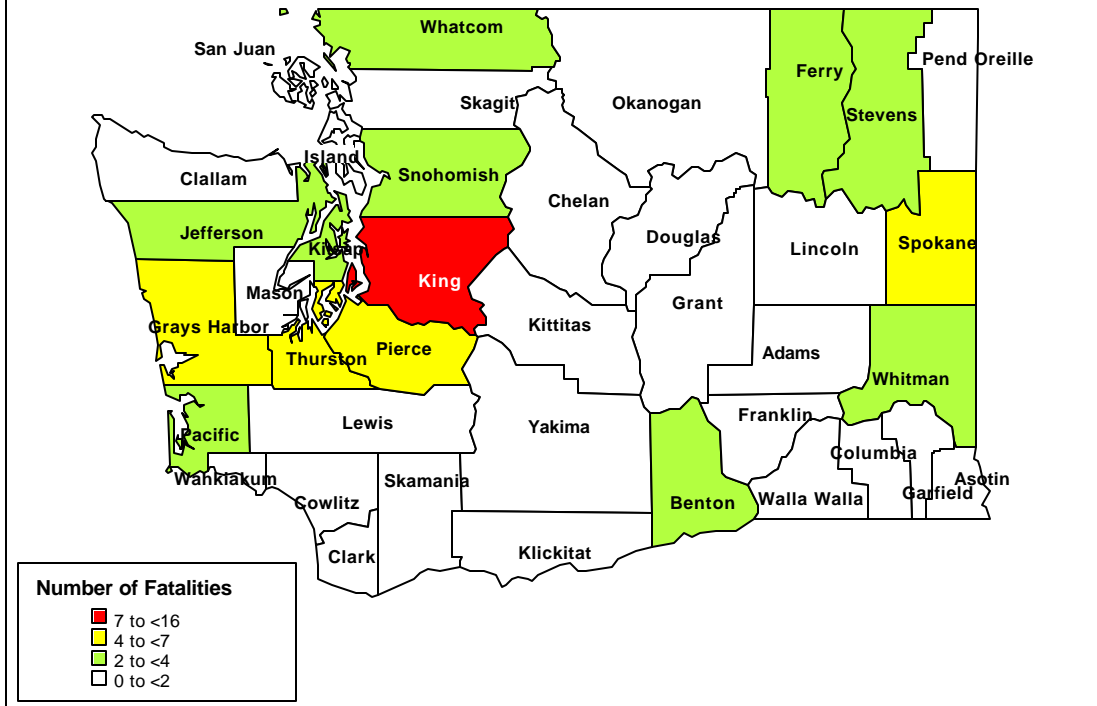
Types of Incidents Not Included

- Naturally caused deaths (heart attacks, aneurysms, etc.) unless there is a work-related component.
- Diseases due to long-term exposure (asbestos and silica)

Fatality Count - 2003, n=73



Work-Related Fatalities, WA FACE Program, 2003, Total=73



Fatalities by L&I Region and Industry Group, 2003 USING SIC Codes (Only includes incidents in WISHA jurisdiction – See page 8 for map of L&I regions)

Industry Group	L&I Region						Total
	1	2	3	4	5	6	
Agriculture, Forestry, & Fishing	0	1	0	0	1	2	4
Mining	0	0	0	0	0	0	0
Construction	3	4	2	1	0	2	12
Manufacturing	1	1	1	2	1	1	7
Transportation and Public Utilities	0	2	2	2	1	1	8
Wholesale Trade	1	2	0	2	0	0	5
Retail Trade	0	0	0	0	0	0	0
Finance, Insurance, & Real Estate	0	0	0	1	0	0	1
Service	0	1	0	1	0	1	3
Government	0	2	1	0	2	1	6
Total	5	13	6	9	5	8	46

**Fatalities by Incident Type, 2003,
WA State, FACE Program**

Incident Type	Number	Percent
Motor vehicle	18	24.7
Machinery	14	19.2
Fall	11	15.1
Struck by falling object	6	8.2
Air transportation	4	5.5
Explosion	3	4.1
Homicide	3	4.1
Suicide	3	4.1
Fire/Burn	2	2.7
Poisoning	2	2.7
Suffocation	2	2.7
Cut/Pierce	1	1.4
Drowning	1	1.4
Electrocution	1	1.4
Hot objects/Substance	1	1.4
Unknown or undetermined	1	1.4
Total	73	100

Fatalities by WA Industry, 2003, FACE Program

Industry (4 digit SIC Code)	Number	Percent
Logging	5	6.8
Local trucking, without storage	3	4.1
Police protection	3	4.1
Automobile services, except repair and carwashes	2	2.7
Dairy farms	2	2.7
Executive offices	2	2.7
Ornamental shrub and tree services	2	2.7
Real estate agents and managers	2	2.7
Wheat	2	2.7
Air courier services	1	1.4
Air transportation, nonscheduled	1	1.4
Air, water & solid waste management	1	1.4
Amusement & recreation services, nec	1	1.4
Berry crops	1	1.4
Business services, nec	1	1.4
Carpentry work	1	1.4
Construction sand and gravel	1	1.4
Crop preparation services for market, ex. cotton ginn	1	1.4
Electrical work	1	1.4
Excavating work	1	1.4
Finfish	1	1.4
Furniture	1	1.4
General building contractors _ industrial buildings	1	1.4
General contractors - residential bldgs	1	1.4
General contractors - single-family houses	1	1.4
General farms, primarily crop	1	1.4
General government, nec	1	1.4
Grain and field beans	1	1.4
Groceries, general line	1	1.4
Heavy construction, nec	1	1.4
Hotels and motels	1	1.4
Land, mineral, wildlife, & forest conservation	1	1.4
Lawn and garden services	1	1.4
Local & suburban transit	1	1.4
Local passenger transportation, nec	1	1.4
Marine cargo handling	1	1.4
Motor vehicle parts, used	1	1.4
Motor vehicle supplies and new parts	1	1.4
Motors & generators	1	1.4
Nonferrous forgings	1	1.4
Nonresidential buildings, other than industrial bldg and	1	1.4
Paper mills	1	1.4
Petroleum & petroleum products wholesalers, except bulk	1	1.4
Plastering, drywall, acoustical, and insulation work	1	1.4
Plumbing, heating, and air-conditioning	1	1.4
Prepackaged software	1	1.4

Private households	1	1.4
Pulp mills	1	1.4
Railroad switching and terminal establishments	1	1.4
Refuse systems	1	1.4
Repair services and related services, nec	1	1.4
Roofing, siding, and sheet metal work	1	1.4
Sausages and other prepared meats products	1	1.4
Sawmills and planing mills, general	1	1.4
Special trade contractors, nec	1	1.4
Trucking, except local	1	1.4
Used merchandise stores	1	1.4
Wood pallets & skids	1	1.4
Wrecking and demolition work	1	1.4
Total	73	100

nec - not elsewhere classified

Fatalities by WA Industry Sector, 2003, FACE Program

Industry (2 digit SIC Code)	Number	Percent
Construction special trade contractors	8	11.0
Lumber & wood products, except furniture	7	9.6
Agricultural production - crops	4	5.5
Agricultural services	4	5.5
Building construction - general contractors & operative	4	5.5
Motor freight transportation and warehousing	4	5.5
Executive, legislative, and general government	3	4.1
Justice, public order and safety	3	4.1
Wholesale trade - durable goods	3	4.1
Wholesale trade - nondurable goods	3	4.1
Administration of environmental quality & housing programs	2	2.7
Agricultural production - livestock and animal specialties	2	2.7
Automotive repair, services and parking	2	2.7
Business services	2	2.7
Local & suburban transit & interurban hwy passenger transpor	2	2.7
Paper and allied products	2	2.7
Real estate	2	2.7
Transportation by air	2	2.7
Amusement & recreation services	1	1.4
Electric, gas, and sanitary services	1	1.4
Electrical and other elec equipment & components	1	1.4
Fabricated metal products, except machinery & transportation	1	1.4
Fishing, hunting, and trapping	1	1.4
Food and kindred products	1	1.4
Heavy construction other than building construction	1	1.4
Hotels, rooming houses, camps, and other lodging places	1	1.4
Mining & quarrying of nonmetallic minerals, except fuels	1	1.4
Miscellaneous repair services	1	1.4
Miscellaneous retail	1	1.4
Private households	1	1.4
Railroad transportation	1	1.4
Water transportation	1	1.4
Total	73	100

Fatalities by Ethnic Origin, 2003, WA FACE Program

Ethnicity	Number	Percent
Non-Hispanic	66	90.4
Hispanic	5	6.8
Currently unknown	2	2.7

Fatalities by Race, 2003, WA FACE Program

Race	Number	Percent
White	66	90.4
American Indian	3	4.1
Asian/Pacific Islander	2	2.7
Unknown	2	2.7

L&I Regions

