

# 1998 Fatality Data - WA FACE Program - as April 10, 1999

[Monthly and Annual Count for 1998](#)

[Data Listing](#) (presented in PDF format; [download](#) the free Adobe Acrobat Reader).

[Summary by County](#)

[Summary of Fatalities in WISHA Jurisdiction by Industry Division and WISHA Region](#)

[Summary by Industry](#) (4 digit SIC code)

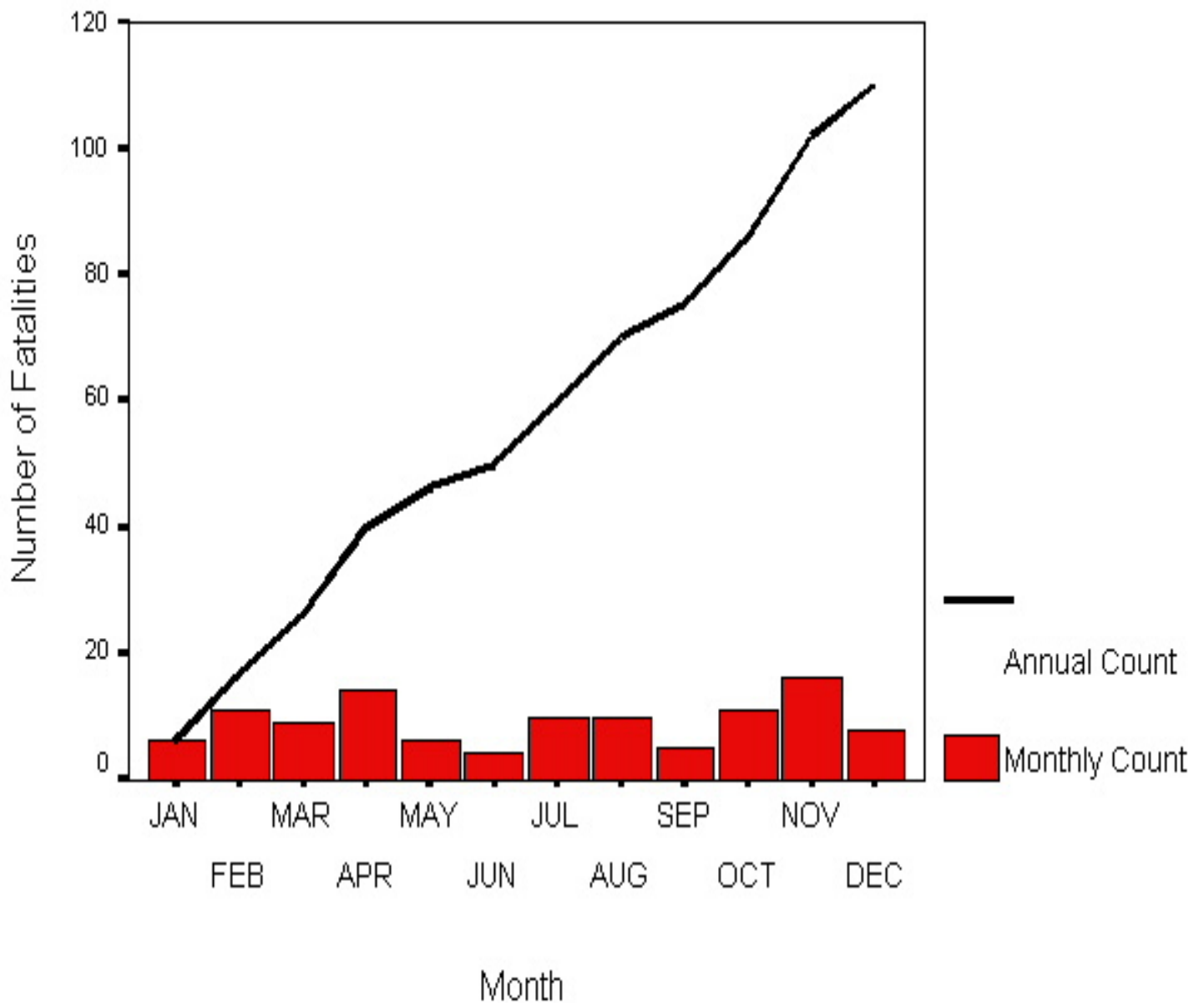
[Summary by Industry Group](#) (2 digit SIC code)

[Summary of Fatalities by Incident Type](#)

---

# Fatality Count - 1998

Washington State FACE Program



## Fatalities by WA County for 1998, FACE program total

County

Number

King	19
Grant	12
Lewis	6
Pierce	6
Skagit	6
Spokane	6
Yakima	6
Franklin	5
Kittitas	4
Klickitat	4
Stevens	4
Thurston	4
Grays Harbor	3
Kitsap	3
Benton	2
Chelan	2
Clallam	2
Clark	2
Pacific	2
Whatcom	2
Adams	1
Asotin	1
Columbia	1
Cowlitz	1
Island	1
Okanogan	1
Pend Oreille	1
Snohomish	1
Walla Walla	1
Whitman	1
Douglas	0
Ferry	0
Garfield	0
Jefferson	0
Lincoln	0
Mason	0

San Juan	0
Skamania	0
Wahkiakum	0
<b>Total</b>	<b>110</b>

---

## Fatalities by L&I region and industry group, 1998 (Only includes incidents in WISHA jurisdiction)

Industry Group	L&I Region						Total
	1	2	3	4	5	6	
Agriculture, Forestry, & Fishing	0	0	2	0	9	0	<b>11</b>
Mining	0	0	0	0	0	1	<b>1</b>
Construction	2	4	1	4	1	1	<b>13</b>
Manufacturing	6	1	0	4	4	3	<b>18</b>
Transportation and Public Utilities	0	2	1	5	3	1	<b>12</b>
Wholesale Trade	0	2	0	0	2	0	<b>4</b>
Retail Trade	1	0	1	1	0	0	<b>3</b>
Finance, Insurance, & Real Estate	0	0	0	1	0	0	<b>1</b>
Service	0	6	2	1	3	0	<b>12</b>
<u>Government</u>	<u>0</u>	<u>0</u>	<u>0</u>	<u>3</u>	<u>1</u>	<u>0</u>	<u><b>4</b></u>
<b>Total</b>	<b>9</b>	<b>15</b>	<b>7</b>	<b>19</b>	<b>23</b>	<b>6</b>	<b>79</b>

---

## Fatalities by WA Industry, 1998, FACE Program totals

<u>Industry</u>	<u>Frequency</u>	<u>Percent</u>
Petroleum refining	6	5.5
Trucking, except local	5	4.5
Deciduous tree fruits	4	3.6
Local trucking, without storage	4	3.6
Land, mineral, wildlife, & forest conservation	3	2.7
Logging	3	2.7
Motor homes	3	2.7
National security	3	2.7
Ship building & repairing	3	2.7
Wheat	3	2.7
Air transportation, nonscheduled	2	1.8
Amusement & recreation services, nec	2	1.8
Building cleaning and maintenance services, nec	2	1.8
Farm management services	2	1.8
Industrial & commercial machinery & equipment, nec	2	1.8
Painting and paper hanging	2	1.8
Police protection	2	1.8
Primary smelting & refining of nonferrous metals	2	1.8
Special product sawmills, nec	2	1.8
Special trade contractors, nec	2	1.8
Air, water & solid waste management	1	0.9
Automobile parking	1	0.9
Beef cattle, except feedlots	1	0.9
Business services, nec	1	0.9
Cable and other pay tv services	1	0.9
Carpentry work	1	0.9
Cash grains, nec	1	0.9
Chicken eggs	1	0.9
Commercial art and graphic design	1	0.9
Computers, computer peripheral equipment and software	1	0.9
Concrete block & brick	1	0.9
Concrete work	1	0.9
Department stores	1	0.9

Direct selling establishments	1	0.9
Drinking places (alcoholic beverages)	1	0.9
Electrical work	1	0.9
Excavating work	1	0.9
Farm supplies	1	0.9
Ferries	1	0.9
Field crops, except cash grains, nec	1	0.9
Florists	1	0.9
Frozen fruits, fruit juices, & vegetables	1	0.9
General building contractors _ industrial buildings and	1	0.9
General contractors - single-family houses	1	0.9
General farms, primarily crop	1	0.9
General warehousing and storage	1	0.9
Hardware	1	0.9
Highway & street construction, except elevated highways	1	0.9
Industrial gases	1	0.9
International affairs	1	0.9
Irrigation systems	1	0.9
Legal services	1	0.9
Local & suburban transit	1	0.9
Local passenger transportation, nec	1	0.9
Miscellaneous marine products	1	0.9
Noncommercial research organizations	1	0.9
Nonresidential buildings, other than industrial bldg and	1	0.9
Operators of residential mobile home sites	1	0.9
Ornamental shrub and tree services	1	0.9
Petroleum & petroleum products wholesalers, except bulk	1	0.9
Photocopying & duplicating services	1	0.9
Plastic products, nec	1	0.9
Plumbing, heating, and air-conditioning	1	0.9
Racing, including track operation	1	0.9
Residential care	1	0.9
Roofing, siding, and sheet metal work	1	0.9
Sawmills and planing mills, general	1	0.9
Scrap & waste materials	1	0.9
Shellfish	1	0.9

Structural steel erection	1	0.9
Top, body, and upholstery repair shops and paint shops	1	0.9
Uranium-radium-vanadium ores	1	0.9
Water, sewer & communications & power line construction	1	0.9
<b>Total</b>	<b>110</b>	<b>100.0</b>

---

## Fatalities by WA Industry Sector, 1998, FACE Program totals

<u>Industry Sector</u>	<u>Number</u>	<u>Percent</u>
Construction special trade contractors	11	10.0
Agricultural production - crops	10	9.1
Motor freight transportation and warehousing	10	9.1
Lumber & wood products, except furniture	6	5.5
Petroleum refining and related industries	6	5.5
Transportation equipment	6	5.5
Business services	5	4.5
Administration of environmental quality & housing programs	4	3.6
National security and international affairs	4	3.6
Agricultural services	3	2.7
Amusement & recreation services	3	2.7
Building construction - general contractors & operative	3	2.7
Wholesale trade - durable goods	3	2.7
Agricultural production - livestock and animal specialties	2	1.8
Automotive repair, services and parking	2	1.8
Fishing, hunting, and trapping	2	1.8
Heavy construction other than building construction	2	1.8
Industrial and commercial machinery and computer equipme	2	1.8
Justice, public order and safety	2	1.8
Local & suburban transit & interurban hwy passenger transpor	2	1.8
Miscellaneous retail	2	1.8
Primary metal industries	2	1.8
Transportation by air	2	1.8
Wholesale trade - nondurable goods	2	1.8
Chemicals & allied products	1	0.9

Communications	1	0.9
Eating and drinking places	1	0.9
Electric, gas, and sanitary services	1	0.9
Engineering, accounting, research, management, & related	1	0.9
Food and kindred products	1	0.9
General merchandise stores	1	0.9
Legal services	1	0.9
Metal mining	1	0.9
Real estate	1	0.9
Rubber & misc. plastics products	1	0.9
Social services	1	0.9
Stone, clay, glass, and concrete products	1	0.9
Water transportaiton	1	0.9
<b>Total</b>	<b>110</b>	<b>100.0</b>

---

## Fatalities by Incident Type, 1998, WA State, FACE Program totals

<u>Incident Type</u>	<u>Number</u>	<u>Percent</u>
Motor vehicle	31	28.2
Air transportation	10	9.1
Fall	10	9.1
Machine	9	8.2
Struck by falling object	9	8.2
Homicide	8	7.3
Explosion	7	6.4
Drowning	6	5.5
Poisoning	5	4.5
Electrocution	3	2.7
Flying object/Caught in	3	2.7
Water transportation	3	2.7
Unknown	2	1.8
Fire	2	1.8
Nature/Environment	1	0.9
Suicide	1	0.9
<b>Total</b>	<b>110</b>	<b>100.0</b>

---



**Return to [FACE Fatality Data](#)**