

Laborer Severely Injured in 60-Foot Fall from Scissor Lift

INCIDENT FACTS

REPORT #: 71-175-2018s

REPORT DATE: March 29, 2019

INCIDENT DATE: February 8, 2018

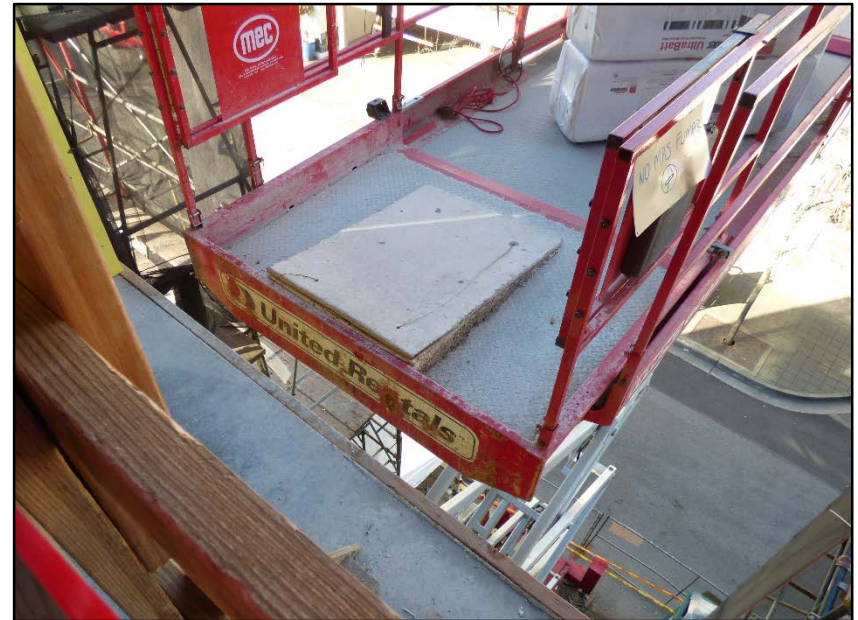
VICTIM: 39 years old

INDUSTRY: Commercial and institutional
building construction

OCCUPATION: Laborer

SCENE: New apartment building site

EVENT TYPE: Fall



A 39-year-old construction laborer was severely injured when he fell 60 feet to the ground below. He fell through a gap between the scissor lift he was working from and the building when the deck extension platform of the scissor lift moved.

The incident took place at job site where a new apartment building was being constructed. The victim had been working for the company for two years.

The day before the incident, an employee reported to a foreman that the rental scissor lift had a broken deck extension locking pin. This spring-loaded pin was used to lock the lift's deck extension in place to keep it from moving while in use.

The foreman instructed the lift operator to contact the rental company for a replacement pin and continue to use the lift until a new pin arrived.

On the day of the incident, the replacement pin had not arrived. The victim and another laborer removed a portion of the lift's platform railing so that they could unload insulation bundles from the lift onto the building's sixth floor.

They extended the platform to allow access to the floor. The other laborer positioned himself toward the rear of the platform. As he was using his foot to brace the extension to keep it from moving, he passed a bundle toward the victim who was standing on the extension. The victim received the bundle from the laborer and began rolling it along the platform. As he was doing this, the extension rolled back into the retracted position, causing him to lose his balance and fall through the gap between the building and the lift.

He landed 60 feet below. He suffered numerous severe injuries. After more than eight months off work he was ready to return to light duty work.

The scissor lift manufacturer does not allow users to exit the platform when elevated.

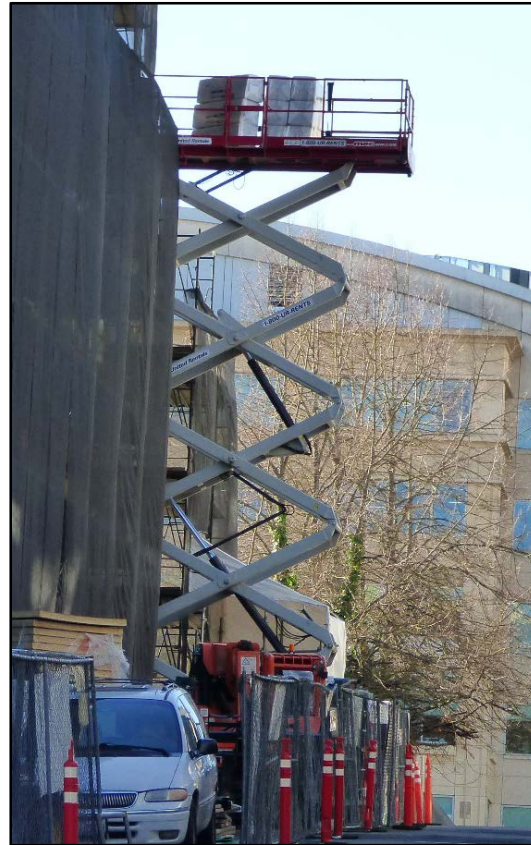


Photo 1. Incident scene showing scissor lift with platform elevated to the sixth floor of an apartment building under construction.

INJURY NARRATIVE

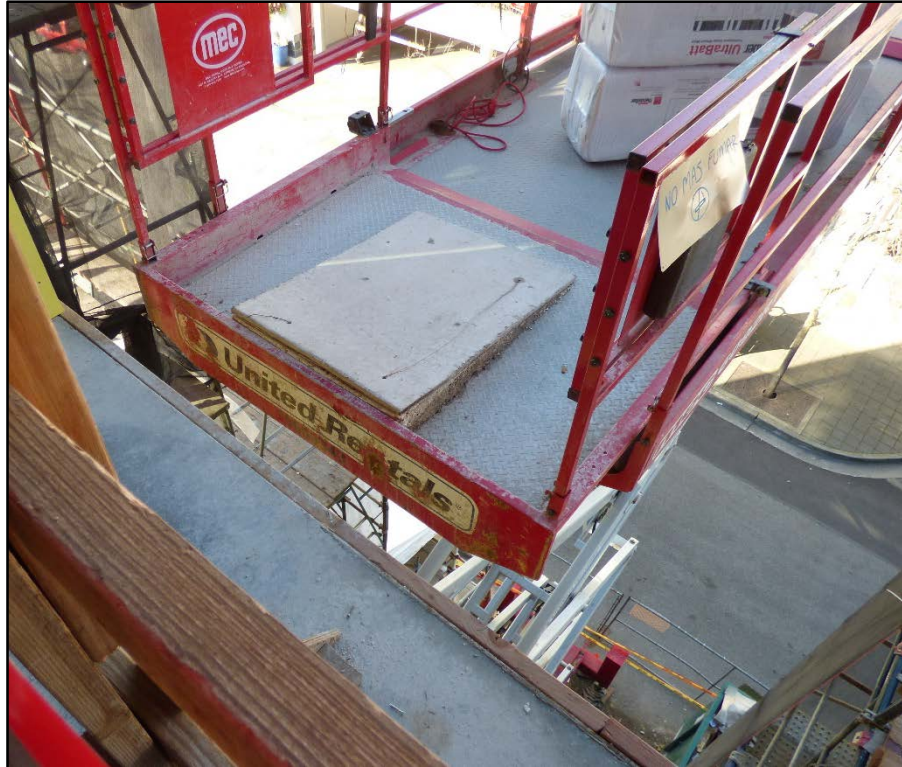


Photo 2. Incident scissor lift showing the gap between the lift and the building through which the laborer fell 60 feet.

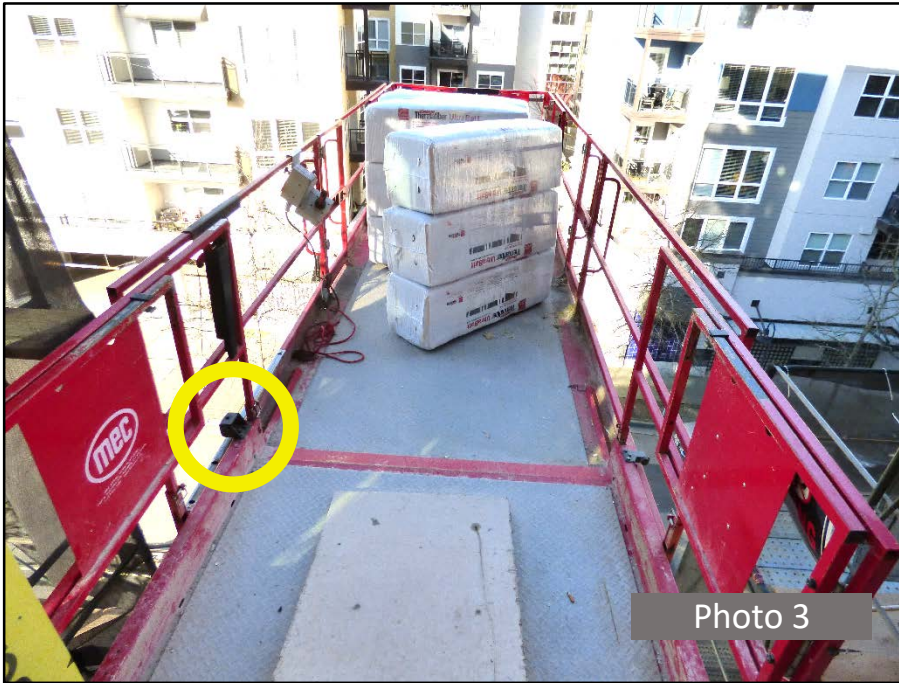


Photo 3. Scissor lift platform at the incident scene. The yellow circle shows the location of the broken deck extension locking pin.

Photo 4. Close-up of where the horizontal locking pin broke off.

Photo 5. Locking pin broken into two pieces.



Photo 4



Photo 5

INJURY NARRATIVE



Photo 6. Scissor lift manufacturer’s warnings. The arrow points to the warning: **“PLATFORM EXTENSION MUST BE LOCKED IN PLACE AT ALL TIMES.”**

Requirements

When employees exit an elevated work platform onto an adjacent structure, they are required to be protected from a fall in accordance with chapter [296-155 WAC Part C-1, Fall Protection Requirements for Construction](#)

Recommendations

- Do not enter or exit a Mobile Elevating Work Platform (MEWP) when elevated to another level, unless the manufacturer allows for this. If the manufacturer allows for this use, then follow their recommended guidelines and procedures.
- Consider other means of delivering materials to elevation, such as a material hoist or reach forklift.
- Do not use damaged or malfunctioning equipment or machinery. Tag and remove from service until it has been repaired by a qualified technician.

This bulletin was developed to alert employers and employees of a serious traumatic injury of a worker in Washington State and is based on preliminary data ONLY and does not represent final determinations regarding the nature of the incident or conclusions regarding the cause of the injury.

Developed by Washington State Fatality Assessment and Control Evaluation (FACE) Program and the Division of Occupational Safety and Health (DOSH), Washington State Dept. of Labor & Industries. The FACE Program is supported in part by a grant from the National Institute for Occupational Safety and Health (NIOSH grant# 5U60OH008487). For more information visit www.lni.wa.gov/Safety/Research/FACE.