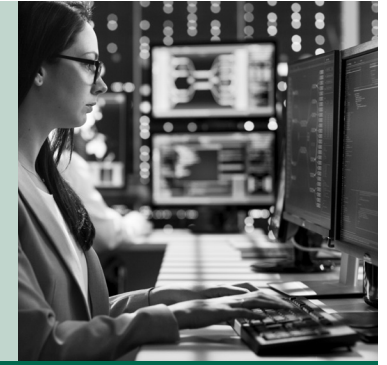


Hourly computer professional phase-in schedule

This is the pay rate phase-in schedule for exempt computer professionals who are paid by the hour. The threshold is a multiplier of the state minimum wage. Computer professionals paid on a salary basis have a different phase-in schedule.



Employer size	July 1, 2020	Jan. 1, 2021	Jan. 1, 2022
1–50 employees	No change (Stays at \$27.63/hour)	2.75x (\$37.65/hour)	3.5x (\$50.72/hour*)
51 or more employees	2.75x (\$37.13/hour)	3.5x (\$47.92/hour)	3.5x (\$50.72/hour*)

* The state minimum wage for 2022 is \$14.49/hour.