

# ELECTRICAL CURRENTS

A Newsletter from the Office of L&I Chief Electrical Inspector Wayne Molesworth

April 2025

## Question of the Month -See Page 2 for the answer.

When selecting overcurrent protection for conductors, at what overcurrent protective device (OCPD) rating is it not permitted to round up to the next higher standard rating?

## Update for Proposed Electrical Fee Increase

The department is proposing a 6.41% fee increase to support operating expenses for electrical inspections and other electrical public safety activities. The increase is the Office of Financial Management's maximum allowable fiscal growth factor rate for fiscal year 2025.

We held a public hearing on the proposed rules on March 25, 2025. Learn more on our [Rule Development](#) page.

Here is what happens next:

- May 19, 2025: CR-103 to be signed by director and new fee rules are adopted.
- July 1, 2025: New fees tentatively become effective.
- Fees will increase on the effective date.

Sections affected by this rule making are 296-46B-906, 296-46B-909, and 296-46B-911.

## Documentation of Hazardous Location Boundaries Required Before Inspection

Electrical inspectors are not the AHJ responsible for documenting boundaries of hazardous (classified) locations.

According to 2023 NEC 500.4:

*"Areas designated as hazardous (classified) locations or determined to be unclassified shall be documented on an area classification drawing and other associated documentation. This documentation shall be available to the authority having jurisdiction (AHJ) and those authorized to design, install, inspect, maintain, or operate electrical equipment at the location."*

Documentation must provide contact information for determining parties and must be available at the jobsite for the duration of the electrical inspection process.

## Result of Fresh Look Reconsiderations Pilot Project

After nearly a year of the Fresh Look Reconsiderations (FLR) pilot project, ended the program on April 1, 2025. The project focused on exploring, identifying and implementing opportunities to enhance the Plumbing and Electrical Program's reconsideration of trainee's submitted affidavits of hours.

Ending the FLR project does not mean programs will not take another look at denied affidavits if new information becomes available. For questions about denied affidavit please contact [ElectricalProgram@Lni.wa.gov](mailto:ElectricalProgram@Lni.wa.gov)

## Safety Tip of the Month

### Maintain a Safe Work Environment

WISHA (the Washington Industrial Safety and Health Act of 1973) obligates your employer to provide a safe place for you to work. Notify your employer immediately if you feel that a hazard exists. Both workers and employers can find assistance with safety issues at:

This document may contain hyperlinks to internet web pages.

Access this PDF document online at:

<https://lni.wa.gov/licensing-permits/electrical/electrical-currents-newsletter/>

Electrical Section Internet Address: <https://www.lni.wa.gov/> -

Select Licensing & Permits, then Electrical

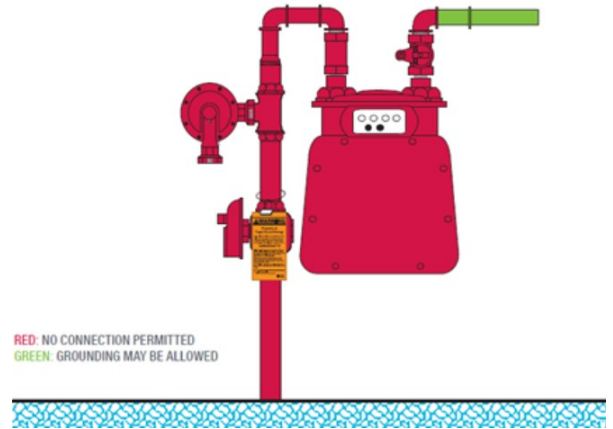


## Natural Gas Meter? Double-Check Your Bonding!

If it is metal, bond it? Not always. NEC 250.53(B) prohibits the use of underground metal natural gas piping as a grounding electrode. To bond metal gas piping according to NEC 250.104 and WAC 296-46B-250, the connection must be on the customer side of the meter, never on the supply side of the meter.

Why? Hubs on natural gas meters are fitted with insulating bushings that isolate building piping from underground natural gas piping that is protected by the utility's corrosion control system (cathodic protection).

Bonding on the wrong side of the meter does not bond the interior piping and can lead to a gas leak, injury or a structure fire. Avoid return trips, always bond on the customer side of a natural gas meter!



## Interested in becoming an electrical construction inspector? We have postings!

Look for available positions at [careers.wa.gov](https://careers.wa.gov). To apply, you must first pass an open-book assessment. To schedule, contact [electricalassessment@lni.wa.gov](mailto:electricalassessment@lni.wa.gov). You must pass the assessment no later than two weeks after the closing date of the job announcement.

*\*\*People with a disability who need accommodation in the testing process may call 360-902-5700. TTY users should first call 711 to access the Washington Relay Service.*

The schedule for assessments is:

1<sup>st</sup> Tuesday of each month: [7273 Linderson Way SW, Tumwater](#)

2<sup>nd</sup> Tuesday of each month: [12806 Gateway Drive S, Tukwila](#)

3<sup>rd</sup> Tuesday of each month: [3001 W Broadway Avenue, Moses Lake](#)

The assessment covers the electrical code, laws and rules, theory, and wiring diagrams. In addition to the National Electrical Code (NEC) and [WAC/RCW](#), many candidates bring in other copyrighted materials such as a keyword indexes to the NEC, electrical formula pocketbook guides, handbooks on electrical theory and a non-programmable calculator. Being familiar with your reference material will greatly improve your chances of success. Use of a computer or cell phone is not allowed during the assessment.

The assessment can take up to seven hours, including a one hour lunch break.

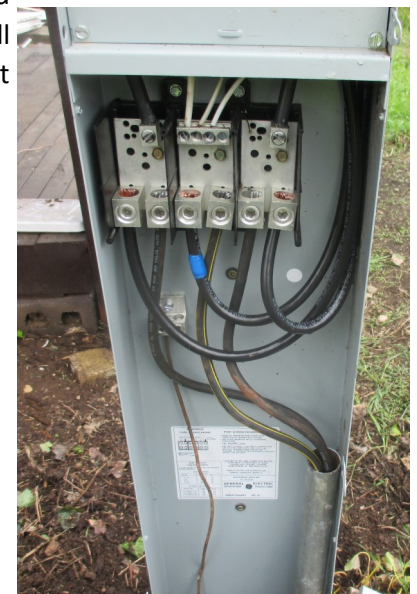
## Answer to Question of the Month:

NEC 240.4(C) Over 800 amps.

When the rating of the OCPD is over eight hundred amps, the ampacity of the conductors must meet or exceed the rating of the OCPD as found in 240.6(A).

## Picture of the Month:

An electrical inspector found this equipment being used as service entrance. How many corrections can you find?



This document may contain hyperlinks to internet web pages.  
Access this PDF document online at: <https://lni.wa.gov/licensing-permits/electrical/electrical-currents-newsletter/>

Electrical Section website: [www.lni.wa.gov/](http://www.lni.wa.gov/) - Select Licensing & Permits, then Electrical

This document is available in alternative formats to accommodate persons with disabilities. For assistance, call 1-800-547-8367. (TDD/TTY users, please call 360-902-5797.) Labor & Industries is an Equal Opportunity employer.