

ELECTRICAL CURRENTS

A Newsletter from the Office of L&I Chief Electrical Inspector Wayne Molesworth

July 2025

Questions of the Month

How long is the window for renewing electrician or administrator certificates? When can they be renewed without retesting?

– See correct answer on page 2.

Electrical Fee Increase Implemented on July 1

For a few months, we have been updating you about changes to our fee schedule. To keep up with higher costs associated with inspection and licensing services, we have adopted rules to increase electrical fees based on the Office of Financial Management (OFM) 6.41% [fiscal growth factor](#) projections.

The fee increase allows the program to continue providing services to help assure safe electrical installations to protect people and property from electrical hazards.

The vast majority of our services are delivered online. If you are using a form requiring fees, is it up to date? It is if dated 07-2025 at the bottom. Find the latest versions of forms on our [website](#).

We cannot process a form until correct fees are paid. Incorrect fees result in delays and added work for all of us.

Find [fees effective July 1, 2025](#).

New Rulemaking Proposals

L&I is proposing changes to the electrical rules. We filed a [CR-101](#) on May 6, 2025.

Amending WAC 296-46B-010, General. We are proposing an adoption date for the 2026 NEC. Before the adoption, stakeholders will have the opportunity to submit proposals to amend the 2026 NEC before it become effective.

Amending WAC 296-46B-334, Nonmetallic-sheathed cable. This change would allow calculating minimum conductor sizes at a higher temperature rating allowing more options for installations.

Amending WAC 296-46B-942, Training certificate required. Clarifying deadlines for affidavits of experience for hours worked as an electrical trainee not registered in an approved apprenticeship program.

Here's what's next:

[A draft of the proposed rules is now available](#). This is your opportunity to provide input before we file the CR-102 Proposed Rules. Please send input to Meagan Edwards at FSPS_Rules@Lni.wa.gov. All preliminary input must be received by Friday, July 25.

There will also be opportunities later to provide comments during a formal public comment period. L&I expects to file the CR-102 Proposed Rulemaking in September 2025. See future editions of this newsletter for more information as the process continues. Find all the rulemaking documents [here](#).

Safety Tip of the Month

Providing an accurate panel directory or circuit identification is not just a good safety practice, it is a NEC requirement.

Section 408.4 requires every circuit and circuit modification to be legibly identified as to its clear, evident, and specific purpose or use.

Spare breakers are to be marked as

This document may contain hyperlinks to internet web pages.

Access this PDF document online at:

<https://lni.wa.gov/licensing-permits/electrical/electrical-currents-newsletter/>

Electrical Section Internet Address: <https://www.lni.wa.gov/> -

Select Licensing & Permits, then Electrical



Interested in Becoming an Electrical Construction Inspector?

Find available positions at careers.wa.gov. To qualify for an interview, candidates must meet minimum qualifications and achieve a score of 70 percent or higher on an open-book assessment no later than two weeks after the closing date of the job announcement. The assessment may take up to seven hours, including a one hour lunch break.

***People with a disability who need accommodation in the testing process may call 360-902-5700. TTY users should first call 711 to access the Washington Relay Service.*

When preparing for the assessment, expect a wide range of questions related to: The 2020 National Electrical Code (NEC), electrical theory, wiring diagrams, and electrical [laws and rules](#).

In addition to the NEC, copies of the electrical laws and rules, and a non-programmable calculator, many candidates bring additional copyrighted materials such as: Keyword indexes to the NEC, electrical formula pocketbook guides, and handbooks on electrical theory.

Being familiar with your reference material can greatly improve your chances of success. Use of a computer, programmable calculator, or cell phone is not allowed during the assessment.

Contact electricalassessment@lni.wa.gov to schedule an assessment at one of the following locations:

1st Tuesday of each month: [7273 Linderson Way SW, Tumwater](#)

2nd Tuesday of each month: [12806 Gateway Drive S, Tukwila](#)

3rd Tuesday of each month: [3001 W Broadway Avenue, Moses Lake](#)

Answer to Question of the Month:

180 days – Ninety days prior to expiration until ninety days after the expiration. Fees double after expiration.

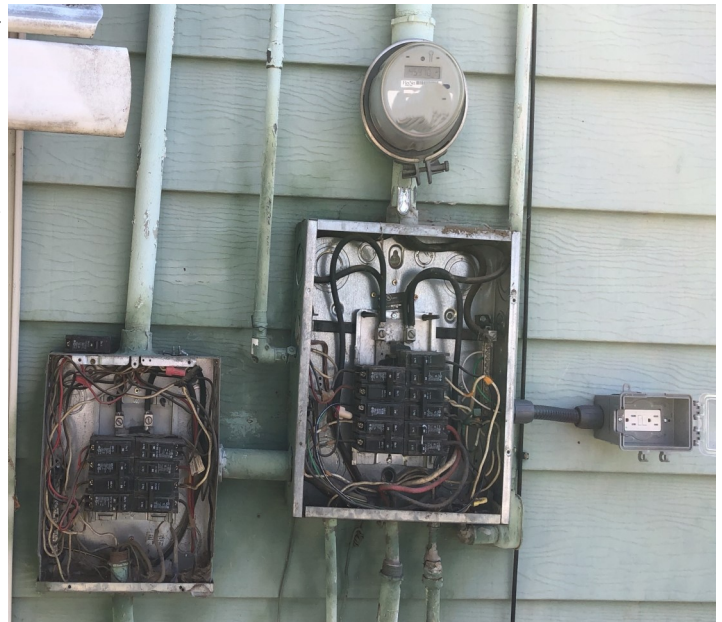
Certificates are renewable if you renew within ninety days after the expiration date. Laws regulating renewal for [electricians](#), [electrical administrators](#) and [telecommunications administrators](#) are very clear, they provide no ability to make exceptions.

Save time and money, renew online [here](#).

Picture of the Month: *If viewing this document online, click on the picture to open a larger image.*

After the fireplace caused a fire in the living room, a restoration company asked an electrical contractor to check out this service. It is easy to determine there was never electrical inspections: No main breaker, all the creative non-compliant connections, and a NEMA 1 enclosure installed outdoors. It is a wonder there were not problems before the fire.

How many code corrections can you find? Fortunately, the electrical contractor replaced the entire thing and remedied the fire damaged circuits before the service was reenergized.



This document may contain hyperlinks to internet web pages.

Access this PDF document online at: <https://lni.wa.gov/licensing-permits/electrical/electrical-currents-newsletter/>

Electrical Section website: www.lni.wa.gov/ - Select Licensing & Permits, then Electrical

This document is available in alternative formats to accommodate persons with disabilities. For assistance, call 1-800-547-8367. (TDD/TTY users, please call 360-902-5797.) Labor & Industries is an Equal Opportunity employer.