

ELECTRICAL CURRENTS



Question of the Month – What is the deadline for qualifying for the (01) general journey-level examination without completing the work experience and education requirements of a registered (01) general journey-level apprenticeship program?

HINTS: RCW [19.28.195](#) Temporary Allowances

WAC [296-46B-945](#)(5)(c) Deadline for Applications

- A. Before January 1, 2025 B. Before July 1, 2023
C. Before July 1, 2026 D. Before December 31, 2026

Inspector Training: No Electrical Inspections Thursday, February 26, 2026

A statewide approach to training improves consistency and is the most efficient way to educate our staff. We regret the inconvenience this causes, please plan accordingly.

Safety Tip of the Month

Stay focused and treat every conductor with care. Your safe work practices on the job ensure you return to the people who rely on you. Follow lockout/tagout procedures, verify isolation, and always test before you touch. Maintain your tools, inspect your PPE, and approach each task with precision. Your attention to detail keeps systems running, prevents downtime, and protects everyone on your job site.

VEI Inspections: Are You Ready Now?

The [Virtual Electrical Inspection](#) (VEI) program offers a convenient service for electrical contractors for [eligible installations](#).

- VEI is available weekdays between 8 am and 4 pm except for [holidays](#). With limited availability between 4 and 5 pm.
- Join the [Ready Now](#) queue inspected in the order received.
- Be ready for an inspector to contact you within a few minutes.

Make sure you have all panels, boxes, and equipment open and ready for inspection.

Rulemaking Updates

2026 National Electric Code Amendments and WAC Rule Update.

L&I is updating electrical rules in WAC [296-46B](#) as part of the adoption process for the 2026 edition of NFPA 70, the National Electrical Code (NEC). This update occurs every three years to keep Washington's electrical standards aligned with national safety requirements and industry practices. The 2026 NEC is scheduled to replace the 2023 edition on December 31, 2026. Find out how to participate in the [January 2026 Special Edition](#) of this newsletter.

We filed a formal [Preproposal Statement of Inquiry](#) (CR 101) on December 16, officially launching the rulemaking process. Thank you to all stakeholders who have participated by submitting rule change proposals or applying to join the Technical Advisory Committee (TAC). We are currently reviewing the applications and proposals, and we will contact TAC members as soon as possible with details about the April meeting. During the rulemaking process, all stakeholders will have opportunities to provide written comments and offer public testimony.

Next Steps:

- July 2026 — Proposed rules (CR-102) expected to be filed
- August 2026 — Public hearing tentatively scheduled
- November 2026 — Final rules (CR-103) expected to be filed
- December 31, 2026 — Updated rules and the 2026 NEC take effect

Learn more on our [rule making page](#).

Proposed Fee Increases for Electrical and Related Programs

The Washington State Department of Labor & Industries (L&I) proposes a 6.51% fee increase for programs involving the trades. This includes [Contractor Registration](#), [Electrical](#), [Elevator](#), [FAS](#) and [Plumber](#) services.

About the fee increase

The programs need the fee increase to cover operating expenses. The current fees are inadequate to cover costs. The amount of the increase is for fiscal year 2027. The number represents the maximum allowable increase based on the [average personal income growth over the past decade](#).

This rulemaking also proposes housekeeping changes to add an additional \$.10 to correct an error from previous fee increase rulemaking to the Master electrician and journey level, specialty or reciprocal electrician exam applications nonrefundable fee.

L&I filed a [CR-102 Proposed Rulemaking](#) on Feb. 3. If adopted, the fee increase would take effect July 1.

You can find information about this rulemaking at L&I's [Rulemaking Activity website](#) or the [Electrical](#), laws and rules page.

How you can participate

A public hearing on the proposed rules will take place **9 a.m. on March 12** at [L&I headquarters, 7273 Linderson Way S.W., Tumwater, WA](#). Besides attending in-person, you can also join by:

Zoom: Click [here](#) to join the meeting Passcode: J^7TYS7*

Telephone: 253-215-8782 **Meeting ID:** 838 1709 2455 **Passcode:** 96881303

The hearing will continue until all oral comments are received.

You can provide testimony and written comments during the hearing, or send written comments by **5 p.m. on Thursday, March 12** to: **Meagan Edwards** Email: CSCPSRules@Lni.wa.gov Fax: 360-704-1980

Mail: Department of Labor & Industries

Field Services & Public Safety Division

P.O. Box 44400

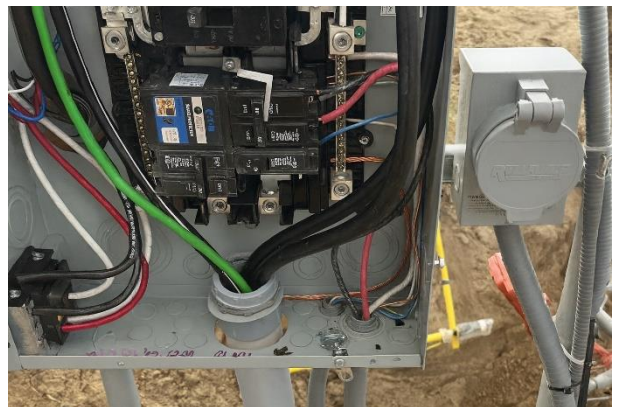
Olympia, WA 98504-4400

If you require communication or accommodation arrangements, please contact Meagan Edwards at 360-522-0125, by Feb. 26.

We welcome your participation in this process. If you need additional information or have questions, please contact Meagan Edwards at 360-522-0125, or CSCPSRules@Lni.wa.gov.

Picture of the Month –

During a well site inspection, the inspector observed a generator power inlet installation with a back-fed breaker that presents safety concerns. The lower right screw securing the breaker hold-down is loose, improperly installed, and appears damaged. Additionally, when the panel's dead front cover is in place, both the main breaker and the back-fed breaker can be energized simultaneously. This indicates that the interlock mechanism is not functioning correctly, creating a potential hazard. Don't miss the conduit installed at the bottom of the panel as well.



Answer to the Question of the Month –

Correct Answer is C. To qualify under the temporary laws and rules, all (01) general journey level examination applications and supporting documents must be received by L&I **before July 1, 2026**.

This document may contain hyperlinks to internet web pages. To access this PDF document online, go to:

<https://lni.wa.gov/licensing-permits/electrical/electrical-currents-newsletter/>

Electrical Section Internet Address: <https://www.lni.wa.gov/> - Select Licensing & Permits, then Electrical

This document is available in alternative formats to accommodate persons with disabilities. For assistance, call 1-800-547-8367.

(TDD/TTY users, please call 360-902-5797.) Labor & Industries is an Equal Opportunity employer.