



Roles, responsibilities, and procedures during the erection and dismantling of tower cranes

Attention: Tower crane owners, contractors, and their employees who use, erect, and dismantle tower cranes.

When erecting or dismantling tower cranes:

- First, ensure that an assembly/disassembly (A/D) director is declared.
- The A/D Director must be present and directing operations with complete authority over the erection, climbing and/or dismantling project.
- The A/D Director must read and understand the manufacturer's erection/dismantling procedures, and review these procedures with all personnel involved.
- It is important that the manufacturer's written procedures are followed.*
- Review key safety measures with crews before work starts.
- Do not remove the pins, bolts and other connecting parts before an assist crane has been connected to the component to be lifted.
- The A/D Director should stay aware of changing conditions that could increase safety hazards and take necessary precautions.

* **Note:** If the manufacturer's procedures need modification for a particular project you need prior written approval from a person in authority from the manufacturer or a registered professional structural engineer.

Who can be the Assembly/Disassembly Director?

- **Assembly/disassembly (A/D) director:** One who is competent and a qualified person, or a competent person assisted by one or more qualified people.
- **Competent:** One who is capable of identifying existing and predictable hazards in the surroundings or working conditions which are unsanitary, hazardous, or dangerous to employees, **and** who has authorization to take prompt corrective measures to eliminate them.
- **Qualified:** A person who, by possession of a recognized degree, certificate, or professional standing, or who by extensive knowledge, training and experience, successfully demonstrated the ability to solve/resolve problems relating to the subject matter, the work, or the project.

Prevent further risk for tower crane collapse by pre-planning!

Effective planning, communication, and procedures, can keep employees safe when erecting and dismantling tower cranes.

Before you begin to erect or dismantle tower cranes:

- Conduct a safety hazard assessment of the affected work area to identify possible hazards and appropriate safety measures.
- Develop a plan for communicating safety measures to all involved in the erecting and dismantling of the crane.
- Provide copies of your safety hazard assessment to the assembly/disassembly director, competent and qualified persons, and onsite supervisors.
- Ensure employees and contractors have appropriate safety training and protective equipment to perform erecting and dismantling activities safely.



Other resources you can access

To find an **electronic** copy of this Hazard Alert, go to www.Lni.wa.gov/Safety/HazardAlerts.

L&I Safety web page: www.Lni.wa.gov/Safety.

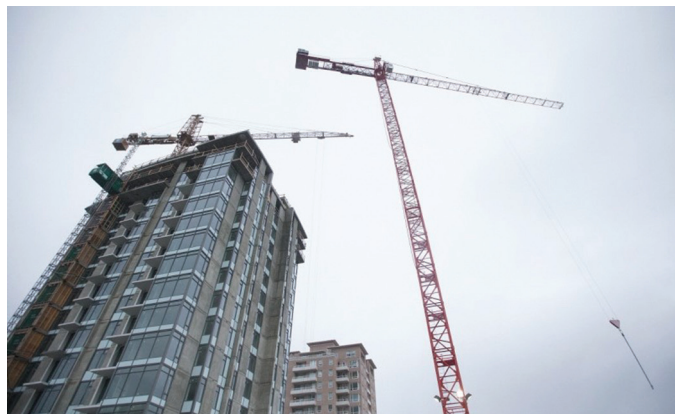
For other related rules, contact your local L&I office or visit the safety rules webpage: www.Lni.wa.gov/SafetyRules.

To find the nearest L&I office, visit www.Lni.wa.gov/Offices.

How can I get help from Labor & Industries?

The Department of Labor & Industries provides consultations, training, and technical assistance at no cost to employers. Call today to schedule a free confidential consultation or go to www.Lni.wa.gov/SafetyConsultants for more information.

You may also call 1-800-423-7233 or visit a local L&I office and ask for the Consultation Manager.



Be aware

Employers who send maintenance and repair personnel to work on a crane at a construction site must ensure they meet the definition for “qualified person” with respect to the maintenance or repair task they perform.

*This alert was developed by L&I’s Division of Occupational Safety and Health (DOSHS) to alert employers, labor groups, and employees to potential hazards associated with work activities. **This is not a rule and creates no new legal obligations.** The information provided includes suggested guidance on how to avoid workplace hazards and describes relevant mandatory safety and health rules. DOSHS recommends you also check the related rules for additional requirements.*